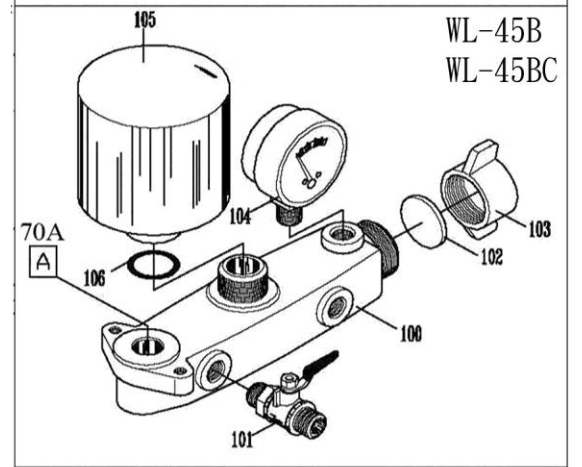
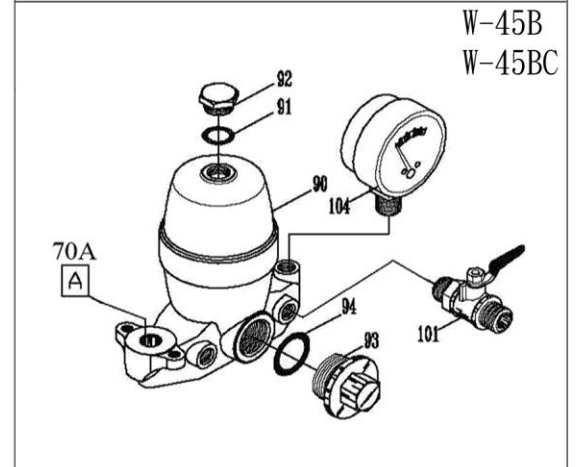
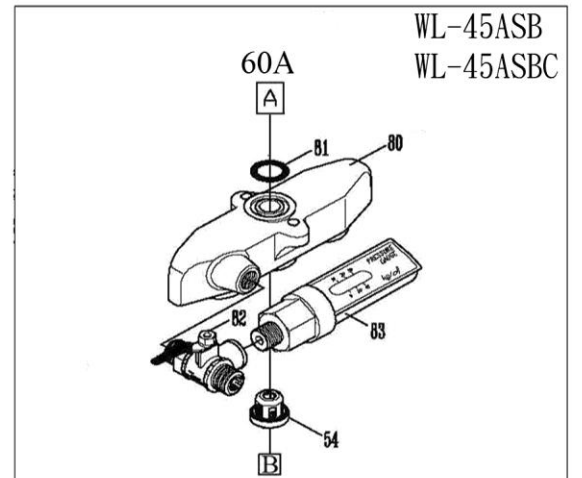


45B SERIES



零件表PARTS LIST W-45B / W-45BC / WL-45B / WL-45BC / WL-45ASB / WL-45ASBC

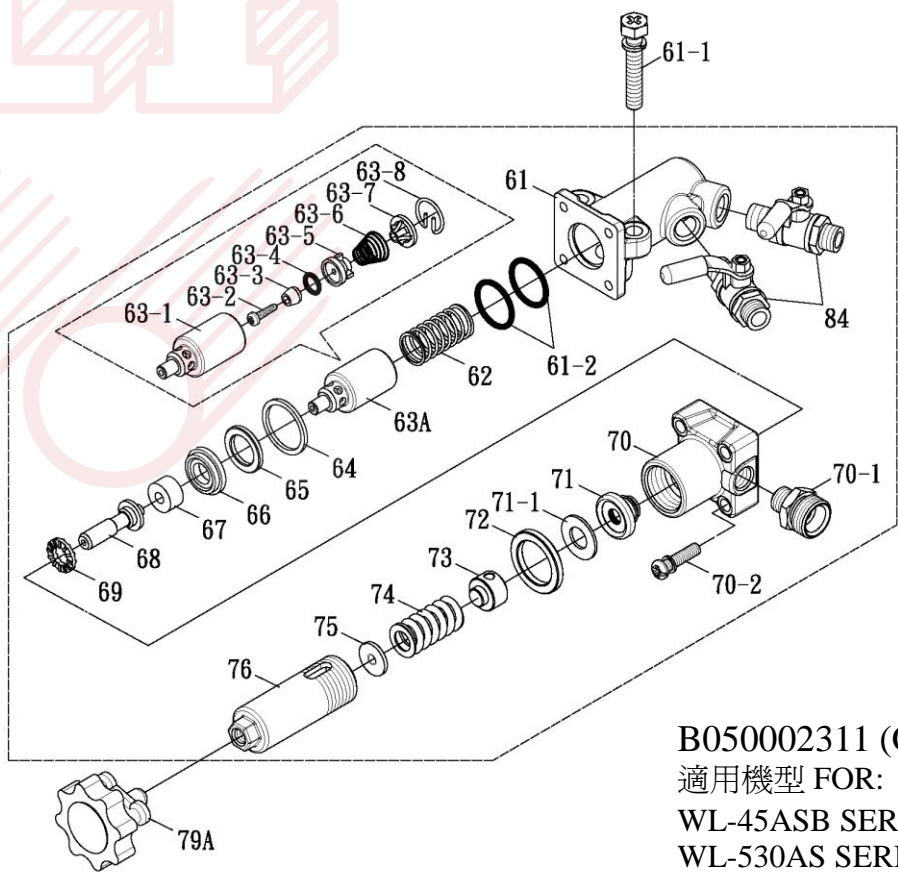
圖號 NO.	編號 CODE	名稱	DESCRIPTION	Q'TY	圖號 NO.	編號 CODE	名稱	DESCRIPTION	Q'TY
01	B010102300	曲軸箱(紅)	CRANKCASE (RED)	1	19	B013002001	陶瓷柱塞組(G1)	CERAMIC PISTON ASSY (G1)	3
	B010102310	曲軸箱(藍)	CRANKCASE (BLUE)		20	B013102000	柱塞桿	PISTON	3
02	B011402000	防塵蓋	DUSTPROOF CAP	1	21	B013202001	柱塞套	CERAMIC PISTON SLEEVE	3
03	BS11110019121	六角螺絲	SET BOLT	1	22	B013308000	柱塞套固定螺絲	PISTON SCREW	3
04	BP11612240300	皮帶輪 9A2*24*5	PULLEY 9A2*24*5	1	23	B013508002	柱塞套平墊圈	GASKET	3
05	BS12106006200	大扁頭螺絲	SCREW	6	24	BG10140018500	O形環	O-RING	3
06	B011001000	曲軸油封蓋(A)	CRANKSHAFT OIL SEAL COVER (A)	2	24-1	BG30156019	背托環	BACK-UP RING	3
07A	B011901014	加油蓋組	OIL INLET COVER ASSY (B)	1	25	B013408000	柱塞套固定螺帽	SET NUT	3
08	B011702000	後蓋迫緊	REAR COVER PACKING	1	19B	B013002003	陶瓷柱塞組(G2)	CERAMIC PISTON ASSY (G2)	3
09	B011602521	曲軸箱後蓋(紅)	REAR COVER (RED)	1	20B	B013102150	柱塞桿	PISTON ROD	3
	B011602530	曲軸箱後蓋(藍)	REAR COVER (BLUE)		21B	B013202150	柱塞套	CERAMIC PISTON SLEEVE	3
10	BS12108016100	大扁頭螺絲	SCREW	5	22B	B013302150	柱塞套固定螺絲	PISTON SCREW	3
11A	B012201003	油鏡組	OIL WINDOW ASSY	1	23B	B015122153	止水墊片	GASKET	3
11	B012201020	油鏡	OIL WINDOW	1	26	B010502110	柱塞銷	PISTON PIN	3
11-1	BG10234028700	O形環	O-RING	1	27	B010402010	不鏽鋼柱塞	SST PISTON	3
12A	B011801001	排油螺絲組	DRAINAGE SCREW ASSY	1	28	B010302000	腳座	CRANKCASE STAND	2
12	B011801000	排油螺絲	DRAINAGE SCREW	1	29	BS11112016122	六角螺絲附華司	SET BOLT W/ WASHER	4
12-1	BG10110015	O形環	O-RING	1	30	B012901110	汽缸銷	SET PIN	2
13	B012101110	曲軸鍵	CRANKSHAFT KEY	1	31	B010202000	柱塞油封	PISTON OIL SEAL	3
14	B010802110	曲軸	CRANKSHAFT	1	32	B011202010	柱塞中間皮	WATERPROOF RING	3
15	B010602002	連桿	CONNECTING ROD	3	40	B020102000	汽缸	CYLINDER	1
15-1	BS11206030500	六角螺絲	SET BOLT	6	41	BS11112025122	六角螺絲附華司	SET BOLT W/ WASHER	4
15-2	BS32206501	彈簧華司	SPRING WASHER	6	42	BS15112070100	雙頭牙螺絲	DOUBLE-END SCREW	2
16	B010702050	軸承	BEARING	2	43	BS21112100	六角螺帽	NUT	2
17	B010902000	曲軸油封	CRANKSHAFT OIL SEAL	2	43-1	BS32112200	彈簧華司	SPRING WASHER	2
18	B011101020	曲軸油封蓋 B	CRANKSHAFT OIL SEAL COVER (B)	1	44	B020801113	黃油杯	GREASE CUP	3

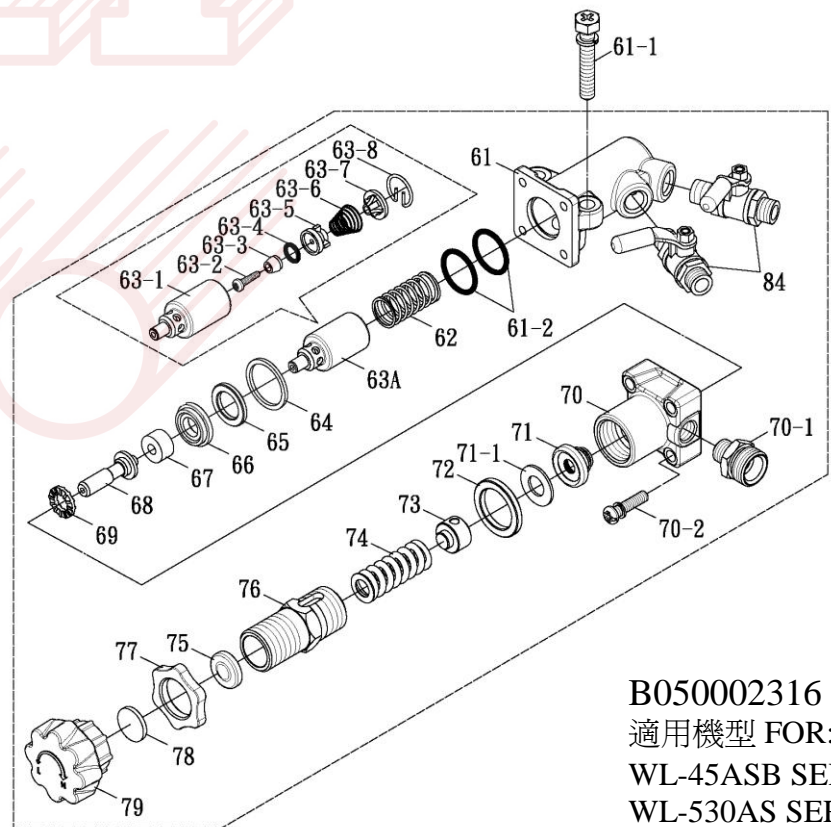
零件表PARTS LIST W-45B / W-45BC / WL-45B / WL-45BC / WL-45ASB / WL-45ASBC

圖號 NO.	編號 CODE	名稱	DESCRIPTION	Q'TY	圖號 NO.	編號 CODE	名稱	DESCRIPTION	Q'TY	
45	B020202020	V迫緊底座	V-PACKING SEAT	3	92	B030801000	空氣室塞頭 (W-)	AIR CHAMBER PLUG (W-)	1	
46	B020302160	V迫緊 (氟素)	V-PACKING (F.P.M.)	9	93	B030702000	出水塞頭 (W-)	PLUG (W-)	1	
	B020302170	V迫緊 (A120)	V-PACKING (A120)		94	BG1028003400	O形環 (W-)	O-RING (W-)	1	
	B020302150	V迫緊 (乙炔隆)	V-PACKING (UCL)		100	B030202000	出水室 (WL-)	OUTLET CHAMBER (WL-)	1	
47	B020402011	黃油環 (POM)	GREASE RING (POM)	3	101	B031601110	球形閥 8.5mm	BALL COCK 8.5mm	2	
	B020402110	黃油環 (銅)	GREASE RING (BRASS)		102	B030602000	防漏墊片 (WL-)	LEAK-PROOF GASKET (WL-)	1	
48	B020902000	V型油環	V-TYPE O-RING	3	103	B030502001	封口蝶頭 (WL-)	WING NUT (WL-)	1	
49	B020502000	調整環	ADJUSTING RING	3	104	B031101000	壓力錶	PRESSURE GAUGE	1	
50	B020702010	調整環固定夾	SET CLIP	3	105	B030402110	空氣室 (WL-)	AIR CHAMBER (WL-)	1	
51/52	B031402031	進水室含銅接頭	SUCTION CHAMBER W/CONNECTOR	1	106	BG10219027100	O形環 (WL-)	O-RING (WL-)	1	
51	B031402030	進水室	SUCTION CHAMBER	1	107	B031502110	*進水口蓋(選配)	*SUCTION CHAMBER CAP (OPTIONAL)	1	
52	B032302110	進水室接頭	CONNECTOR	1	ACC.	B150102001	吸水管組 1"*9 尺	SUCTION HOSE ASSY	1	
53	BS11112038122	六角螺絲附華司	SET BOLT W/ WASHER	2	ACC.	B150201001	迴水管組 1/2"*9尺	OVERFLOW HOSE ASSY	1	
54	B040002031	活門組	VALVE ASSY	6	ACC.	B150602110	過濾網申目	FILTER SOCKET	1	
55	B040302030	活門帽	VALVE CAGE	6	ACC.	B150901110	過濾網	FILTER	1	
55-1	B040502000	活門塞座	VALVE PLUG BASE	6						
56	BJ20201002	活門彈簧	VALVE SPRING	6						
57	B040102020	活門塞	VALVE PLUG	6						
58	B040202020	活門座	VALVE SEAT	6						
59	B040402000	活門皮	VALVE PACKING	6						
*60A	<b>B050002311</b>	自動洩壓總成(G2)	UNLOADING VALVE ASSY (G2)	1						
	<b>B050002316</b>	自動洩壓總成(G3)	UNLOADING VALVE ASSY (G3)	1	*60A(G2)零件表及展開圖請參閱第4頁。			*60A (G2) parts list & diagram please refer to page 4.		
*70A	<b>B050001004</b>	安全弁(不含調壓螺絲組)(G2)	SAFETY VALVE ASSY(W/O KNOB) (G2)	1	*60A(G3)零件表及展開圖請參閱第5頁。			*60A (G3) parts list & diagram please refer to page 5.		
	<b>B050001006</b>	安全弁(G3)	SAFETY VALVE ASSY(G3)	1	*70A(G2)零件表及展開圖請參閱第6頁。			*70A(G2) parts list & diagram please refer to page 6.		
90	B030102000	出水室連結空氣室 (W-)	OUTLET & AIR CHAMBER (W-)	1	*70A(G3)零件表及展開圖請參閱第7頁。			*70A(G3) parts list & diagram please refer to page 7.		
91	BG10140018500	O形環 (W-)	O-RING (W-)	1						

2020.02V



圖號 NO.	編號 CODE	名稱	DESCRIPTION	Q'TY	圖號 NO.	編號 CODE	名稱	DESCRIPTION	Q'TY
61	B050202000	洩壓汽缸套	UNLOADING VALVE CYLINDER	1	74	BJ40101000	調壓彈簧	PRESSURE REGULATING SPRING	1
*61-1	BS13110038122	六角十字螺絲附華司	SET BOLT W/ WASHER	2	75	B051301000	彈簧上座	SPRING SEAT (UPPER)	1
61-2	BG10220027010	O形環	O-RING	2	76	B050401000	調壓彈簧套	PRESSURE REGULATING PIPE	1
62	BJ50201000	洩壓輔助彈簧	AUXILIARY SPRING	1	*79A	B053001001	調壓螺絲組	PRESSURE REGULATING KNOB ASSY	1
63A	B052201001	柱塞活門組	PISTON VALVE ASSY	1	84	B031601110	球形閥 8.5mm	BALL COCK 8.5mm	2
63-1	B052201000	柱塞活門體	PISTON VALVE BODY	1	*61-1 不屬於自動洩壓總成標準零件，須另外訂購。 * 61-1 is not a standard part, please order it as needed.				
63-2	BS18105016300	圓頭自攻螺絲	SCREW	1	*79A 不屬於自動洩壓總成標準零件，須另外訂購。 * 79A is not a standard part, please order it as needed.				
63-3	B052401000	閥塞頭	VALVE PLUG	1	2020.02V				
63-4	BG10080012010	O形環	O-RING	1	 <p style="text-align: right;">B050002311 (G2) 適用機型 FOR: WL-45ASB SERIES WL-530AS SERIES</p>				
63-5	B052501000	閥塞座	VALVE PLUG SEAT	1					
63-6	BJ30101000	球閥固定彈簧	SPRING	1					
63-7	B052301000	彈簧底座	SPRING SEAT	1					
63-8	B052601000	C扣環	C-CLIP	1					
64	BG20250030	方形環	SQUARE RING	1					
65	B052101110	壓力閥輔助片	AUXILIARY PLATE	1					
66	B051001000	壓力閥座	VALVE SEAT	1					
67	B050901000	壓力閥	PRESSURE VALVE	1					
68	B050801120	壓力閥桿	VALVE ROD	1					
69	B051901000	消音片	DAMPER PLATE	1					
70	B050501000	迴水座	OVERFLOW CHAMBER	1					
70-1	B051801110	迴水接頭	OVERFLOW COUPLING	1					
70-2	BS14108025122	圓頭螺絲附華司	SCREW & WASHER	4					
71	B050701020	伸縮套皮	COMPRESSION PACKING	1					
71-1	B051101010	平墊圈	WASHER	1					
72	B052001110	固定環	SET RING	1					
73	B051401110	彈簧下座(有牙)	SPRING SEAT	1					

圖號 NO.	編號 CODE	名稱	DESCRIPTION	Q'TY	圖號 NO.	編號 CODE	名稱	DESCRIPTION	Q'TY
61	B050202000	洩壓汽缸套	UNLOADING VALVE CYLINDER	1	74	BJ40101002	調壓彈簧	PRESSURE REGULATING SPRING	1
*61-1	BS13110038122	六角十字螺絲附華司	SET BOLT W/ WASHER	2	75	B051301250	彈簧上座	SPRING SEAT (UPPER)	1
61-2	BG10220027010	O形環	O-RING	2	76	B050301002	調壓彈簧套	PRESSURE REGULATING PIPE	1
62	BJ50201000	洩壓輔助彈簧	AUXILIARY SPRING	1	77	B052001010	安全弁固定環	SET RING	1
63A	B052201001	柱塞活門組	PISTON VALVE ASSY	1	78	B053601000	調壓把手墊片	GASKET	1
63-1	B052201000	柱塞活門體	PISTON VALVE BODY	1	79A	B053001011	調壓把手	PRESSURE REGULATING KNOB	1
63-2	BS18105016300	圓頭自攻螺絲	SCREW	1	84	B031601110	球形閥 8.5mm	BALL COCK 8.5mm	2
63-3	B052401000	閥塞頭	VALVE PLUG	1	*61-1 不屬於自動洩壓總成標準零件，須另外訂購。 * 61-1 is not a standard part, please order it as needed.				
63-4	BG10080012010	O形環	O-RING	1	2020.02V				
63-5	B052501000	閥塞座	VALVE PLUG SEAT	1					
63-6	BJ30101000	球閥固定彈簧	SPRING	1					
63-7	B052301000	彈簧底座	SPRING SEAT	1					
63-8	B052601000	C扣環	C-CLIP	1					
64	BG20250030	方形環	SQUARE RING	1					
65	B052101110	壓力閥輔助片	AUXILIARY PLATE	1					
66	B051001000	壓力閥座	VALVE SEAT	1					
67	B050901000	壓力閥	PRESSURE VALVE	1					
68	B050801120	壓力閥桿	VALVE ROD	1					
69	B051901000	消音片	DAMPER PLATE	1					
70	B050501000	迴水座	OVERFLOW CHAMBER	1					
70-1	B051801110	迴水接頭	OVERFLOW COUPLING	1					
70-2	BS14108025122	圓頭螺絲附華司	SCREW & WASHER	4					
71	B050701020	伸縮套皮	COMPRESSION PACKING	1					
71-1	B051101010	平墊圈	WASHER	1					
72	B052001110	固定環	SET RING	1					
73	B051401110	彈簧下座(有牙)	SPRING SEAT	1					

B050002316 (G3)  
適用機型 FOR:  
WL-45ASB SERIES  
WL-530AS SERIES

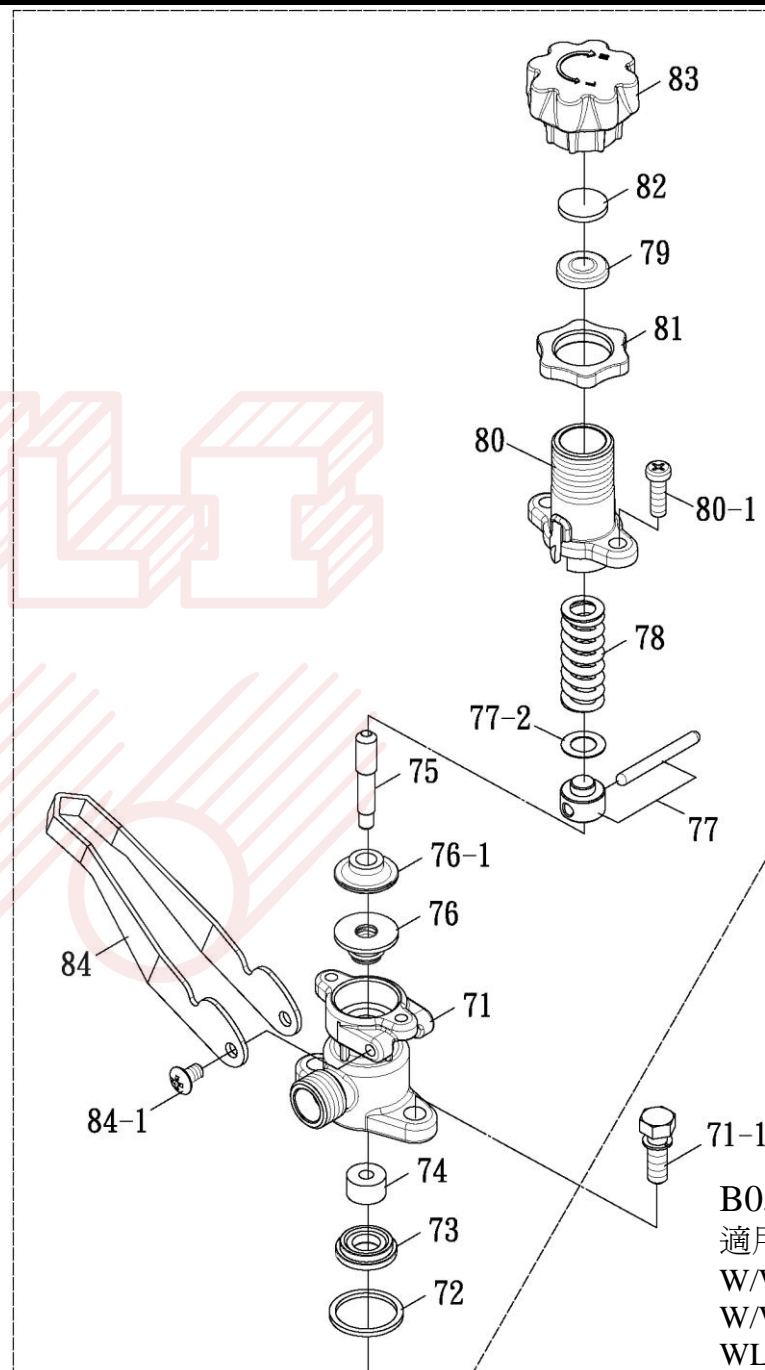




零件表PARTS LIST 安全弁 B050001006 (G3) / SAFETY VALVE ASSEMBLY (G3)

W/WL-25B/45B/520系列用

圖號 NO.	編號 CODE	名稱	DESCRIPTION	Q'TY
71	B050101031	迴水座	OVERFLOW CHAMBER	1
*71-1	BS11110025122	六角螺絲附華司	SET BOLT W/ WASHER	2
72	BG20250030	方形環	SQUARE RING	1
73	B051001000	壓力閥座	VALVE SEAT	1
74	B050901000	壓力閥	PRESSURE VALVE	1
75	B050801110	壓力閥桿	VALVE ROD	1
76	B050701000	伸縮套皮	COMPRESSION PACKING	1
76-1	B051201000	閥桿保持環	MAINTAINING RING	1
77	B051401001	彈簧下座組	SPRING SEAT ASSY	1
N/A	B051401000	彈簧下座(無牙)	SPRING SEAT	1
N/A	B051501000	調壓橫棒	PRESSURE ADJUSTING PIN	1
77-2	B053601001	調壓墊片	SPACER	1
78	BJ40101002	調壓彈簧	PRESSURE REGULATING SPRING	1
79	B051301250	彈簧上座	SPRING SEAT (UPPER)	1
80	B050301001	調壓彈簧套	PRESSURE REGULATING SPRING SLEEVE	1
80-1	BS12108016100	大扁頭螺絲	SCREW	2
81	B052001010	安全弁固定環	SET RING	1
82	B053601000	調壓把手墊片	GASKET	1
83	B053001011	調壓把手	PRESSURE REGULATING KNOB	1
84	B050601110	調壓把手	PRESSURE REGULATING HANDLE	1
84-1	BS12108013100	大扁頭螺絲	SCREW	2
*71-1 不屬於安全弁標準零件，須另外訂購。 * 71-1 is not a standard part, please order it as needed.				
2020.02V				



B050001006 (G3)  
 適用機型 FOR:  
 W/WL-25B SERIES  
 W/WL-45B SERIES  
 WL-520 SERIES