

WH-12140
WH-12170

零件表PARTS LIST WH-12140 / WH-12170

圖號 NO.	編號 CODE	名稱	DESCRIPTION	Q'TY	圖號 NO.	編號 CODE	名稱	DESCRIPTION	Q'TY
01	B010119320	曲軸箱	CRANKCASE	1	04-3	B013219000	柱塞套 WH-12140	CERAMIC PISTON SLEEVE WH-12140	3
01-2	B012919000	汽缸銷	SET PIN	2		B013219210	柱塞套 WH-12170	CERAMIC PISTON SLEEVE WH-12170	
01-3	B100519050	圓內塞頭 1/4"	PLUG 1/4"	3	04-4	B013319000	柱塞套固定螺絲	PISTON SET SCREW	3
01-4	BS50016010	塞頭 PT1/2	PLUG PT1/2	1	04-5	B013519001	柱塞套平墊圈	GASKET	3
02	B010219010	柱塞油封 SC25*40*8	PISTON OIL SEAL	3	04-6	B013419000	柱塞套固定螺帽	PISTON SET NUT	3
	B010219011	柱塞油封 SC25*52*8	PISTON OIL SEAL		04-7	BG10110015020	O形環	O-RING	3
02-1	B014419000	柱塞油封套 WH-12140	PISTON OIL SEAL SLEEVE WH-12140	3	04-8	BG30123015900	背托環	BACK-UP RING	3
	B014419001	柱塞油封套 (C) WH-12140	PISTON OIL SEAL SLEEVE (C) WH-12140		05	B010519000	柱塞銷	PISTON PIN	3
	B014419210	柱塞油封套 WH-12170	PISTON OIL SEAL SLEEVE WH-12170		06A	B010619001	連桿組	CONNECTING ROD ASSY	3
	B014419211	柱塞油封套 (C) WH-12170	PISTON OIL SEAL SLEEVE (C) WH-12170		06	N/A	連桿	CONNECTING ROD	3
02-2	BG10430049050	O形環	O-RING	3	06-1	B014119000	連桿軸套	CONNECTING ROD SLEEVE	6
02-3	B014519000	柱塞油封墊圈	GASKET	3	06-2	B014319000	螺絲防鬆片	LOCK WASHER	3
	B014519001	柱塞油封墊圈 (C)	GASKET (C)		06-3	BS31210500	平面華司	WASHER	6
03	B010319000	腳座	CRANKCASE STAND	2	06-4	BS11210055500	六角螺絲	HEX SCREW	6
03-1	BS15214057300	雙頭牙螺絲	DOUBLE-END SCREW	4	06-5	B014219000	引擎培林	ENGINE BEARING	3
03-2	BS31214200	平面華司	WASHER	4	07	B010719000	軸承 (KOYO)	BEARING (KOYO)	2
03-3	BS32214300	彈簧華司	SPRING WASHER	4		B010719001	軸承 (NSK)	BEARING (NSK)	
03-4	BS21214300	六角螺帽	HEX NUT	4	08	B010819001	曲軸	CRANKSHAFT	1
03-5	BS11212100300	六角螺絲	HEX SCREW	2	08-1	B012119000	曲軸鍵	CRANKSHAFT KEY	1
03-6	BS21212300	六角螺帽	HEX NUT	2	08-2	B013905000	皮帶輪保護墊圈	GASKET	1
03-7	BS31212201	平面華司	WASHER	2	08-3	BS32212300	彈簧華司	SPRING WASHER	1
04A	B013019001	柱塞組 WH-12140	CERAMIC PISTON ASSY WH-12140	3	08-4	BS11212025300	六角螺絲	HEX SCREW	1
	B013019010	柱塞組 WH-12170	CERAMIC PISTON ASSY WH-12170		09	B010919010	曲軸油封	CRANKSHAFT OIL SEAL	2
04-1	B013119010	柱塞桿	PISTON ROD	3	10	B011019320	軸承油封蓋	CRANKSHAFT OIL SEAL COVER	2
04-2	B013519010	柱塞套透氣墊圈 WH-12140	GASKET WH-12140	3	10-1	BG11144120630	O形環	O-RING	2
	B013519210	柱塞套透氣墊圈 WH-12170	GASKET WH-12170		10-2	B012619000	軸承蓋平墊圈	SHIM	4

零件表PARTS LIST WH-12140 / WH-12170

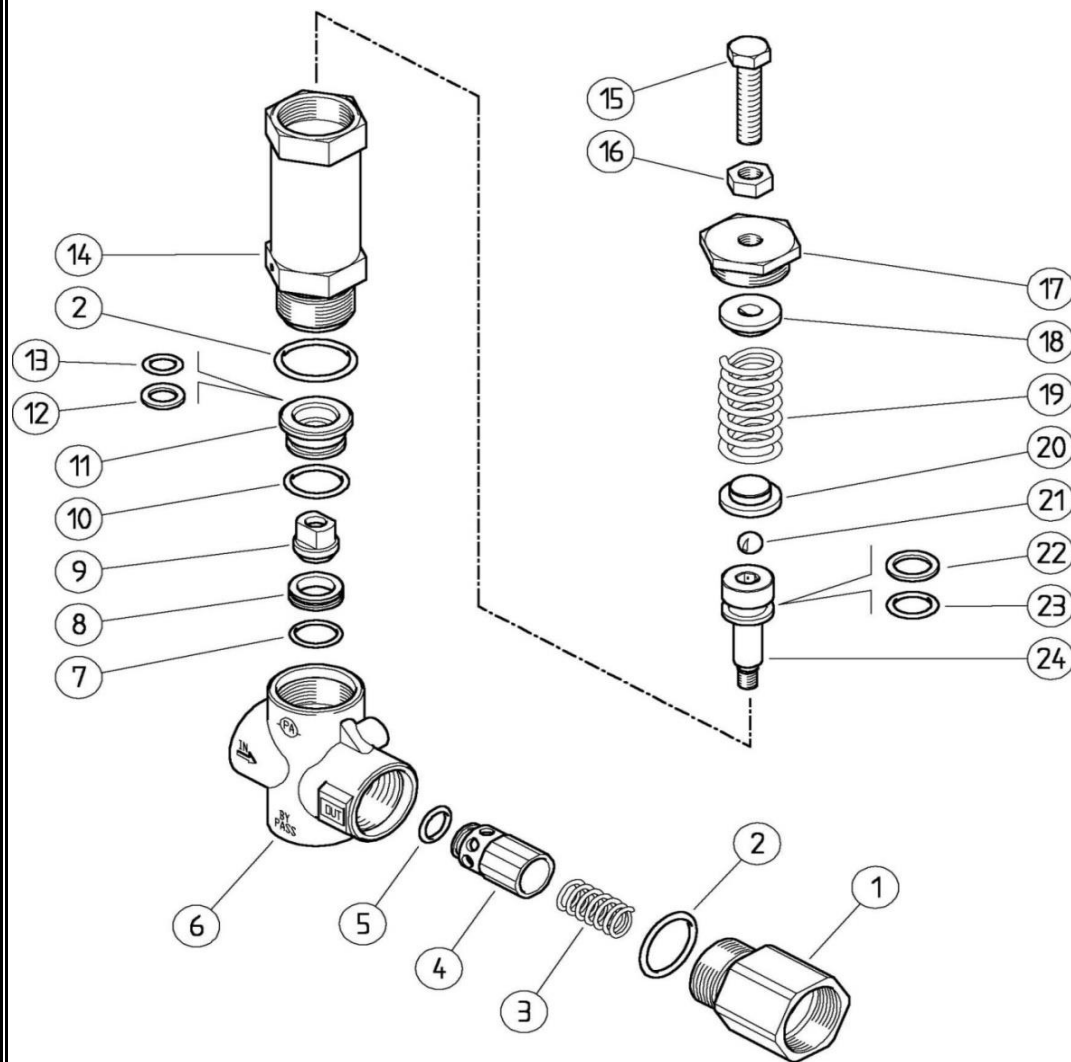
圖號 NO.	編號 CODE	名稱	DESCRIPTION	Q'TY	圖號 NO.	編號 CODE	名稱	DESCRIPTION	Q'TY
10-3	BS16208025300	內六角螺絲	SCREW	8	*18	B011319011	潤滑棉【選配】WH-12140	FELT COLLAR【OPTIONAL】WH-12140	3
10-4	BS32208300	彈簧華司	SPRING WASHER	8		B011319211	潤滑棉【選配】WH-12170	FELT COLLAR【OPTIONAL】WH-12170	
10-5	BS31208306	平面華司	WASHER	8	*19	B023819112	潤滑棉固定片【選配】WH-12140	GASKET【OPTIONAL】WH-12140	3
11	B011119310	曲軸蓋	CRANKSHAFT COVER	1		B023819113	潤滑棉固定片【選配】WH-12170	GASKET【OPTIONAL】WH-12170	
11-1	BS16206016300	內六角螺絲	SCREW	4	21	B031419010	汽缸後座 WH-12140	INLET CHAMBER WH-12140	1
11-2	BS32206300	彈簧華司	SPRING WASHER	4		B031419110	汽缸後座 WH-12170	INLET CHAMBER WH-12170	
11-3	BS31206302	平面華司	WASHER	4	21-1	BG10320040	O形環 WH-12140	O-RING WH-12140	3
12	B011619320	曲軸箱後蓋	REAR COVER	1		BG10345041500	O形環 WH-12170	O-RING WH-12170	
12-1	B011719000	後蓋迫緊	REAR COVER PACKING	1	21-2	BS16214040300	內六角螺絲	SCREW	4
12-2	BS16208025300	內六角螺絲	SCREW	8	21-3	BS16212040300	內六角螺絲	SCREW	2
12-3	BS32208300	彈簧華司	SPRING WASHER	8	21-4	BS16212100300	內六角螺絲	SCREW	2
12-4	BS31208306	平面華司	WASHER	8	21-5	B100519030	圓內塞頭 1-1/2"	PLUG 1-1/2"	2
13	B012219050	油量指示螺絲	SCREW	1	22	B021019000	防水油封 WH-12140	WATERPROOF OIL SEAL WH-12140	3
13-2	B012219000	油量指示棒	OIL POINTER	1		B021019020	防水油封 WH-12140 (加強)	WATERPROOF OIL SEAL WH-12140 (PTFE)	
14	B011810000	排油螺絲	DRAINAGE SCREW	1		B021019210	防水油封 WH-12170	WATERPROOF OIL SEAL WH-12170	
14-1	BG10106017700	O形環	O-RING	1		B021019220	防水油封 WH-12170 (加強)	WATERPROOF OIL SEAL WH-12170 (PTFE)	
15A	B011919001	加油蓋組	OIL INLET COVER ASSY	1	22-1	B024019000	防水油封墊圈 WH-12140	WATERPROOF RING GASKET WH-12140	3
15	B011905000	加油蓋	OIL INLET COVER	1	23	B021219021	V迫緊套 WH-12140 (PTFE)	V-PACKING COLLAR WH-12140 (PTFE)	3
15-1	B012719010	擋油片	DAMPER PLATE	1		B021219211	V迫緊套 WH-12170 (PTFE)	V-PACKING COLLAR WH-12170 (PTFE)	
15-2	B014619310	擋油盒	OIL PAN	1	24	B020319040	V迫緊 WH-12140 (高壓布皮)	V-PACKING FABRIC WH-12140	6
15-3	B012005000	加油蓋方形環	SQUARE RING	1		B020319050	V迫緊 WH-12140 (氟素布皮)	V-PACKING FABRIC WH-12140 (VITON)	
16	BS81212100	環首螺栓	EYE BOLT	1		B020319210	V迫緊 WH-12170 (高壓布皮)	V-PACKING FABRIC WH-12170	
16-1	BS31212201	平面華司	WASHER	1	25	B020219000	V迫緊底座 WH-12140	V-PACKING SEAT WH-12140	3
*17	B014619000	油盒【選配】	OIL PAN【OPTIONAL】	1		B020219210	V迫緊底座 WH-12170	V-PACKING SEAT WH-12170	
*17-1	BS31206310	平面華司【選配】	WASHER【OPTIONAL】	2	26	BJ61901021	V迫緊彈簧 WH-12140	V-PACKING SPRING WH-12140	3
*17-2	BS16206016300	內六角螺絲【選配】	SCREW【OPTIONAL】	2		BJ61901211	V迫緊彈簧 WH-12170	V-PACKING SPRING WH-12170	

零件表PARTS LIST WH-12140 / WH-12170

圖號 NO.	編號 CODE	名稱	DESCRIPTION	Q'TY	圖號 NO.	編號 CODE	名稱	DESCRIPTION	Q'TY	
27	B021119000	迫緊上環 WH-12140	PACKING UPPER RING WH-12140	3	30-1	BG30400045810	背托環	BACK-UP RING	6	
	B021119210	迫緊上環 WH-12170	PACKING UPPER RING WH-12170		30-2	BG10387045730	O形環	O-RING	6	
27-1	BG10472054230	O形環 WH-12140	O-RING WH-12140	6		BG10387045710	O形環 (氟素)	O-RING (VITON)		
	BG10472054210	O形環 WH-12140 (氟素)	O-RING WH-12140 (VITON)		31	BJ21901211	活門輔助彈簧	VALVE AUXILIARY SPRING	6	
	BG10504057400	O形環 WH-12170	O-RING WH-12170		32	B021719001	進水接頭	INLET CONNECTOR	1	
27-2	BG30490054810	背托環 WH-12140	BACK-UP RING WH-12140	6	OPT.	B031109000	壓力表	PRESSURE GAUGE	1	
	BG30515056800	背托環 WH-12170	BACK-UP RING WH-12170		OPT.	B071215000	(壓力表)出水接頭	PRESSURE GAUGE COUPLING	1	
28	B020119010	汽缸前座 WH-12140	MANIFOLD WH-12140	1	OPT.	B070001012	義大利進口安全弁	SAFETY VALVE (ITALY)	1	
	B020119110	汽缸前座 WH-12170	MANIFOLD WH-12170		OPT.	B023515030	安全弁接頭	SAFETY VALVE COUPLING	1	
28-1	BS16212070300	內六角螺絲	SCREW	8	OPT.	BP22024400	皮帶輪 12B4*40*10*8	PULLEY 12B4*40*10mm*8	1	
28-2	B100519040	圓內塞頭 1"	PLUG 1"	2	OPT.	BS11112032121	皮帶輪螺絲	PULLEY SET BOLT	1	
29A	B040019002	活門組 WH-12140	VALVE ASSY WH-12140	6	OPT.	B150904001	銅過濾網	SUCTION FILTER	1	
	B040019011	活門組 WH-12170	VALVE ASSY WH-12170		OPT.	B150604000	過濾網申目	FILTER SOCKET	1	
29-1	B040819000	活門套	VALVE CAGE	6	OPT.	B030719000	進水塞頭	INLET PLUG	1	
29-2	B040319010	活門帽	VALVE CAGE	6	OPT.	B030719001	出水塞頭	OUTLET PLUG	1	
29-3	BJ21901001	活門彈簧	VALVE SPRING	6						
29-4	B040119000	活門塞	VALVE PLUG	6						
29-5	B040219000	活門座 WH-12140	VALVE SEAT WH-12140	6						
	B040219210	活門座 WH-12170	VALVE SEAT WH-12170							
29-6	BG10280032030	O形環 WH-12140	O-RING WH-12140	6						
	BG10280032010	O形環 WH-12140 (氟素)	O-RING WH-12140 (VITON)							
	BG10315035500	O形環 WH-12170	O-RING WH-12170							
29-7	BG30290031810	背托環 WH-12140	BACK-UP RING WH-12140	6						
	BG30320034800	背托環 WH-12170	BACK-UP RING WH-12170							
30	B021319020	活門固定螺絲 (S630)	VALVE BOLT (S630)	6	*17~19為防止凍結可選配件			*17~19 are anti-freeze options.		
	B021319010	活門固定螺絲 (S316)	VALVE BOLT (S316)		灰底零件非標準零件，依客戶需求購買。			Gray parts are non-standard parts, please order as needed.		
									2024.05V	

零件表PARTS LIST 進口安全弁 B070001012 / 60.5000.15 VB200/150 UNLOAD. 1" F BSP (MADE IN ITALY) ※選配/OPTIONAL

圖號 NO.	P/N	名 稱	DESCRIPTION	Q'TY/ UNIT	最低訂量 MOQ
1	60.5026.31	出水接頭	COUPLING, 1" BSP BRASS	1	3
2	10.3206.01	O形環	O-RING, 2,62x28,25 mm	2	10
3	60.5013.51	止水彈簧	SPRING, 1,3x18x29 mm Sst.	1	10
4	60.5012.99	出水閘座套	SHUTTER PIN, BRASS+OR 5,33x12,06 mm N	1	2
5	10.3314.00	O形環	O-RING, 5,33x12,06 mm	1	10
6	60.5024.35	安全弁本體	HOUS,-VB200/150-1" BSP FF	1	1
7	10.3072.01	O形環	O-RING, 1,78x20,35 mm Ni 85	1	10
8	60.5002.51	壓力閘座	SEAT, 15,8x23x6 mm Sst.	1	2
9	60.5003.51	壓力閘	SHUTTER PIN, M8 Sst.	1	3
10	10.3195.01	O形環	O-RING, 2,62x20,29 mm Ni 90	1	10
11	60.5010.31	過渡襯套	REDUCTION BUSHING, BRASS	1	2
12	10.4080.00	背托環	BACK-UP RING, 12x18,2x2 mm	1	10
13	10.3234.00	O形環	O-RING, 3,53x10,69 mm	1	10
14	60.5009.31	安全弁接頭	PISTON HOLDER, BRASS	1	1
15	60.5011.61	調壓螺絲	VALVE REGULATING SCREW, M10x44 Z.PL.	1	3
16	11.4629.00	六角螺帽	HEX. NUT, M10	1	10
17	60.5008.31	塞頭	UPPER PLUG, M10 BRASS	1	1
18	60.5005.31	彈簧上座	SPRING GUIDE SPACER, BRASS	1	1
19	60.5006.61	調壓彈簧	SPRING , 6x30x62 mm	1	5
20	60.5007.31	彈簧下座	SPRING GUIDE SPACER, BRASS	1	3
21	14.7461.00	鋼珠	BALL, 13/32" Sst.	1	10
22	10.4081.00	背托環	BACK-UP RING, 15,8x22x2 mm	1	10
23	10.3237.00	O形環	O-RING, 3,53x15,47 mm	1	10
24	60.5004.51	壓力閘桿	PISTON, M8 Sst.	1	2
			2020.03V.		



B070001012
適用機型FOR:
WH-12140
WH-12170