

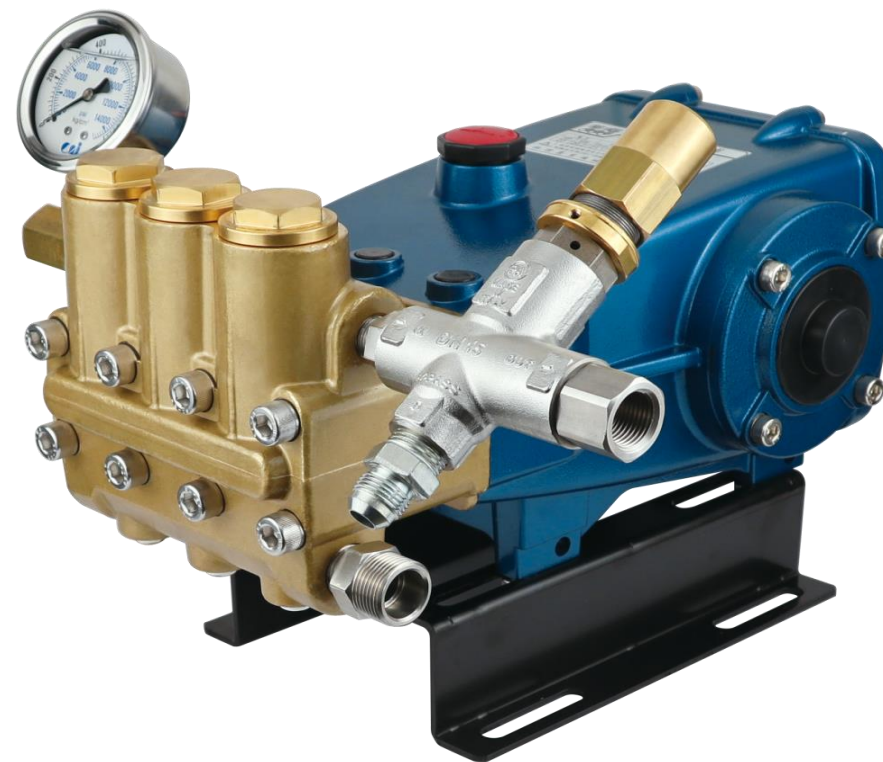
WH-70018
WH-70021
WH-70024

零件表PARTS LIST WH-70018 / WH-70021 / WH-70024

圖號 NO.	編號 CODE	名稱	DESCRIPTION	Q'TY	圖號 NO.	編號 CODE	名稱	DESCRIPTION	Q'TY
01	B010124500	曲軸箱	CRANKCASE DARK BLUE	1	11-2	B012624500	軸承蓋平墊圈	SHIM	2
02	B010224500	柱塞油封	PISTON OIL SEAL	3	11-3	BS16208020501	內六角螺絲	SCREW	8
03	B010312000	腳座	CRANKCASE STAND	2	11-4	BS32208200	彈簧華司	SPRING WASHER	8
03-1	BS11210015222	六角螺絲附華司	HEX SCREW W/ WASHER	4	12	B011624500	曲軸箱後蓋	REAR COVER	1
04-1	B013124500	柱塞桿	PISTON ROD	3	12-1	B012201020	油鏡	OIL WINDOW	1
04-2	B013510020	柱塞套平墊圈	GASKET	3	12-2	BG10234028700	O形環	O-RING	1
04-3	B013511110	柱塞套透氣墊圈	GASKET	3	12-3	BG11550161	O形環	O-RING	1
04-4	B013224500	柱塞套	CERAMIC PISTON SLEEVE	3	12-4	BS16206020200	內六角螺絲	SCREW	6
04-5	BS11206070301	六角螺絲	HEX SCREW	3	12-5	BS32206200	彈簧華司	SPRING WASHER	6
04-6	B015124000	止水墊片	GASKET	3	13	B011823000	排油螺絲	DRAINAGE SCREW	1
05	B010524500	柱塞銷	PISTON PIN	3	13-1	BG10130019	O形環	O-RING	1
05-1	BS41015010	扣環	BUCKLE RING	6	14	B011901014	加油蓋組	OIL INLET COVER ASSY	1
06A	B010624501	連桿組	CONNECTING ROD ASSY	3	15	B012405000	滴油孔蓋	DRIP CAP	3
06	N/A	連桿	CONNECTING ROD	3	21	B020124500	汽缸	MANIFOLD	1
06-1	BS11208040500	六角螺絲	HEX SCREW	6	21-1	BS16210110300	內六角螺絲	SCREW	8
06-2	BS31208503	平面華司	WASHER	6	21-2	BS33210400	安全華司	SAFETY WASHER	8
07	B014324500	螺絲防鬆片	LOCK WASHER	3	22	B020324200	U迫緊	U-PACKING	3
08	B010724500	軸承	BEARING	2	22-1	B020324210	U迫緊底座	U-PACKING SEAT	3
09	B010824502	曲軸 WH-70018	CRANKSHAFT WH-70018	1	22-2	B020324220	U迫緊墊片	U-PACKING SPACER	3
	B010824503	曲軸 WH-70021	CRANKSHAFT WH-70021		23	BG10346037230	O形環	O-RING	3
	B010824507	曲軸 WH-70024	CRANKSHAFT WH-70024		24	B021124200	迫緊上環	PACKING UPPER RING	3
09-1	B012115000	曲軸鍵	CRANKSHAFT KEY	1	25	B021011001	防水油封	LOW PRSSURE SEAL	3
10	B010924500	曲軸油封	CRANKSHAFT OIL SEAL	1	26	BS50004040	內六角油塞 PT1/8	PLUG PT1/8	1
10-1	B010923100	全密曲軸油封	END COVER OIL SEAL	1	27	1S50016040	內六角油塞 PT1/2	PLUG PT1/2	1
11	B011024500	軸承油封蓋	CRANKSHAFT OIL SEAL COVER	2	28	BS50008050	內六角油塞 PT1/4	PLUG PT1/4	3
11-1	BG10758081100	O形環	O-RING	4	30A	B040024501	活門組	VALVE ASSY	3

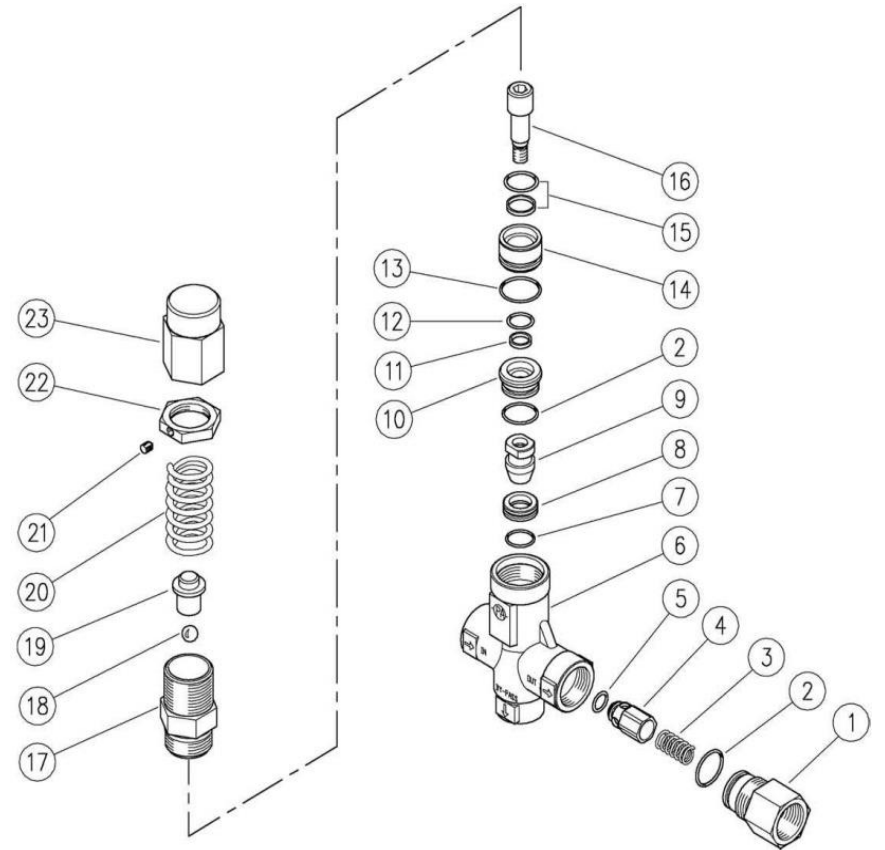
零件表PARTS LIST WH-70018 / WH-70021 / WH-70024

圖號 NO.	編號 CODE	名 稱	DESCRIPTION	Q'TY	
30-1	B040324000	出水活門帽	OUTLET VALVE CAGE	3	
30-2	BJ22401000	活門彈簧	VALVE SPRING	6	
30-3	B040124500	活門塞	VALVE PLUG	6	
30-4	B040224500	出水活門座	OUTLET VALVE SEAT	3	
30-5	BG10170021040	O形環	O-RING	3	
30-6	BG30178021100	背托環	BACK-UP RING	3	
30-7	B040324010	進水活門帽	INLET VALVE CAGE	3	
30-8	B040224010	進水活門座	INLET VALVE SEAT	3	
30-9	BG10140018040	O形環	O-RING	3	
30-10	BG30148018100	背托環	BACK-UP RING	3	
41	B021324500	活門固定螺絲	VALVE SET SCREW	3	
41-1	BG30249029100	背托環	BACK-UP RING	3	
41-2	BG10240029040	O形環	O-RING	3	
41-3	BJ21001210	活門輔助彈簧	VALVE AUXILIARY SPRING	3	
42	B071818010	進水接頭	INLET CONNECTOR	1	
43	B031119310	壓力錶	PRESSURE GAUGE	1	
44	B031209000	壓力錶接頭	PRESSURE GAUGE CONNECTOR	1	
*45	B070001005	進口安全弁	SAFETY VALVE (ITALY)	1	
46	B023524500	安全弁接頭	SAFETY VALVE CONNECTOR	1	
47	BK31505060	雙外牙	CONNECTOR	1	
ACC.	B150324501	高壓管 5/8" *9尺	HIGH PRESSURE HOSE 5/8"*9FT	1	
ACC.	B150110003	吸水管組 3/4"*10尺	INLET HOSE ASSY 3/4"*10FT	1	
ACC.	B150609120	過濾網申目	FILTER SOCKET	1	
ACC.	B150909110	過濾網	FILTER	1	
*45零件表及展開圖請參閱第4頁。			*45 parts list & diagram please refer to page 4.		
			2024.04V		



零件表PARTS LIST 進口安全弁 B070001005 / 60.1470.00 VB53 UNLOAD. 1/2F BSP 50MPA-AI303 (MADE IN ITALY)

圖號 NO.	P/N No.	WULI Code	名 稱	DESCRIPTION	Q'TY/ UNIT	最低訂量 MOQ
1	60.1404.51R		出水接頭	SHUTTER COUPL., 1/2F BSP Sst.	1	3
2	10.3068.01R	D011102001	O形環	O-RING, 1,78x17,17 mm Ni 85	2	10
3	60.1403.60R		止水彈簧	SPRING, 0,8x10,7x23 mm aisi316 Sst.	3	10
4	60.1402.51R	D011102010	出水閥座套	SHUTTER PIN, Sst.	1	3
5	10.3230.01R	D011102011	O形環	O-RING, 3,53x7,52 mm Ni85	1	10
6	60.1401.55R		安全弁本體	Sst VB23/43 BODY	1	1
7	10.3066.01R	D011102002	O形環	O-RING, 1,78x15,6 mm Ni 85	1	10
8	60.1809.51R	D011102003	壓力閥座	SEAT, 11,6x19x6 mm Sst.	1	5
9	60.1808.51R	D011102004	壓力閥	SHUTTER PIN, M8 Sst.	1	3
10	60.1410.51R		間隔環	SPACER RING, 10x23,4x10,5 mm Sst.	1	3
11	10.4022.00R	D011102005	背托環	BACK-UP RING, 10x12x2 mm	1	10
12	10.3059.10R	D011102006	O形環	O-RING, 1,78x11,11 mm Vi 70	1	10
13	10.3072.01R	D011102007	O形環	O-RING, 1,78x20,35 mm Ni 85	1	10
14	60.1409.51R		間隔環	SPACER RING, 10,3x23,5x17,5 mm Sst.	1	3
15	10.2029.00R	D011102008	背托環+O形環	STEM SEAL, 14x19x2.2 mm+O-RING	1	4
16	60.1411.51R	D011102009	壓力閥桿	PISTON, M8 Sst.	1	5
17	60.1406.51R		安全弁接頭	PISTON HOLDER, Sst.	1	5
18	14.7443.10R		鋼珠	BALL, 11/32" Sst.	1	10
19	60.1405.31R		彈簧下座	SPRING REST PIN, BRASS	1	10
20	60.5402.61R		調壓彈簧	Spring, 5,4x22x64,5 mm z.pl.	1	3
21	16.2100.00R		固定環	SET SCREW, DIN914 M4x4 mm	1	10
22	60.1728.31R		環形螺母	RING NUT, M27x1 BRASS	1	10
23	60.1408.31R		調壓螺帽	VALVE REGULATING RING NUT, M27x1 BRASS	1	5



B070001005
適用機型FOR:
WH-70018
WH-70021
WH-70024
WH-70026