

WH-70026

零件表PARTS LIST WH-70026

圖號 NO.	編號 CODE	名稱	DESCRIPTION	Q'TY	圖號 NO.	編號 CODE	名稱	DESCRIPTION	Q'TY
01	B010119320	曲軸箱	CRANKCASE	1	07	B010719000	軸承	BEARING	2
01-2	B012919000	汽缸銷	SET PIN	2	08	B010819310	曲軸	CRANKSHAFT	1
01-3	B100519050	圓內塞頭 1/4"	PLUG 1/4"	3	08-1	B012119000	曲軸鍵	CRANKSHAFT KEY	1
01-4	BS50016010	塞頭：PT1/2	PLUG PT1/2	1	08-2	B013905000	皮帶輪保護墊圈	PROTECTING GASKET	1
02	B010219310	柱塞油封	PISTON OIL SEAL	3	08-3	BS32212300	彈簧華司	SPRING WASHER	1
02-1	B014519000	柱塞油封墊圈	GASKET	3	08-4	BS11212025300	六角螺絲	SET BOLT	1
03	B010319000	腳座	CRANKCASE STAND	2	09	B010919010	曲軸油封	CRANKSHAFT OIL SEAL	2
03-1	BS15214057300	雙頭牙螺絲	DOUBLE-END SCREW	4	10	B011019320	軸承油封蓋	BEARING OIL SEAL COVER	2
03-2	BS31214200	平面華司	WASHER	4	10-1	BG11144120630	O形環	O-RING	2
03-3	BS32214300	彈簧華司	SPRING WASHER	4	10-2	B012619000	軸承蓋平墊圈	SHIM	2
03-4	BS21214300	六角螺帽	NUT	4	10-3	BS16208025300	內六角螺絲	HEX SCREW	8
04A	B013019310	柱塞組	PISTON ASSY	3	10-4	BS32110300	彈簧華司	SPRING WASHER	8
04-1	B013119310	柱塞桿	PISTON	3	10-5	BS31208306	平面華司	WASHER	8
04-2	B013519330	柱塞套擋水墊圈	GASKET	3	11	B011119310	曲軸蓋	CRANKSHAFT COVER	1
04-3	B013519320	柱塞套透氣墊圈	GASKET	3	11-1	BS16206016300	內六角螺絲	HEX SCREW	4
04-4	B013219310	柱塞套	PISTON SLEEVE	3	11-2	BS32108300	彈簧華司	SPRING WASHER	4
04-5	BG10080012040	O形環	O-RING	3	11-3	BS31206302	平面華司	WASHER	4
04-6	B013319310	柱塞套固定螺絲	PISTON SCREW	3	12	B011619320	曲軸箱後蓋	REAR COVER	1
05	B010519000	柱塞銷	PISTON PIN	3	12-1	B011719000	後蓋迫緊	REAR COVER PACKING	1
06A	B010619001	連桿組	CONNECTING ROD ASSY	3	12-2	BS16208025300	內六角螺絲	HEX SCREW	8
06	N/A	連桿	CONNECTING ROD	3	12-3	BS32110300	彈簧華司	SPRING WASHER	8
06-1	B014119000	連桿軸套	CONNECTING ROD SLEEVE	6	12-4	BS31208306	平面華司	WASHER	8
06-2	B014319000	螺絲防鬆片	LOCK WASHER	3	13/13-1	B012219050	油量指示螺絲組	SCREW ASSY	1
06-3	BS31210500	平面華司	WASHER	6	13-2	B012219000	油量指示棒	OIL POINTER	1
06-4	BS11210055500	六角螺絲	SET BOLT	6	14	B011810000	排油螺絲	DRAINAGE SCREW	1
06-5	B014219000	引擎培林	ENGINE BEARING	3	14-1	BG10106017700	O形環	O-RING	1

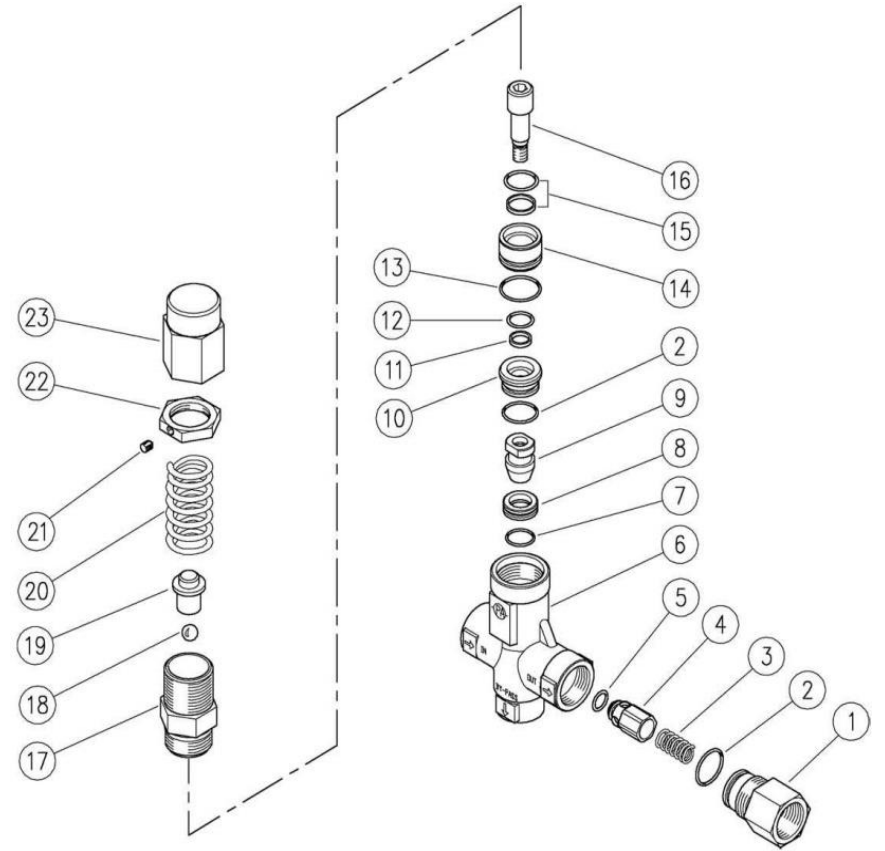
零件表PARTS LIST WH-70026

圖號 NO.	編號 CODE	名稱	DESCRIPTION	Q'TY	圖號 NO.	編號 CODE	名稱	DESCRIPTION	Q'TY	
15A	B011919311	加油蓋組	OIL INLET COVER ASSY	1	25-6	BG30326036	背托環	BACKUP RING	3	
16	BS81212100	環首螺栓	SCREW	1	25-7	BG10320036	O形環	O-RING	3	
16-1	BS31212201	平面華司	WASHER	1	25-8A	B040219321	出水活門座組	VALVE SEAT	3	
18	B031419310	汽缸後座	SUCTION CHAMBER	1	25-8	B070309000	陶瓷球閥	CERAMIC BALL VALVE	3	
18-1	BS16214065300	內六角螺絲	SCREW	4	25-9	B040919310	活門座平墊圈	GASKET	3	
18-2	BS15214200300	汽缸固定螺絲	SCREW	8	25-10	BJ20901000	活門彈簧	VALVE SPRING	3	
18-3	B019243200	90°微霧進水接頭	90°INLET CONNECTOR	4	25-11	B040519310	出水活門塞座	VALVE PLUG SEAT	3	
18-4	B150363013	鋼絲高壓軟管	FLEXIBLE HOSE	2	26	B030219310	出水室	INLET CHAMBER	1	
19	B021119310	防水油封套	WATERPROOF OIL SEAL COVER	3	26-1	BS32214300	彈簧華司	SPRING WASHER	8	
19-1	BG10340038900	O形環	O-RING	3	26-2	BS21214300	六角螺帽	NUT	8	
19-2	B020310260	U迫緊	U-PACKING	3	27	B031219310	壓力錶接頭	PRESSURE GAUGE COUPLING	1	
20	B022019310	防水油封固定片	SET PLATE	3	28	B031119310	壓力錶	PRESSURE GAUGE	1	
20-1	BS16206010300	內六角螺絲	SCREW	6	29	B021719310	進水接頭	INLET COUPLING	1	
21	B023319310	汽缸軸	CYLINDER SHAFT	3	30	B023519310	安全弁接頭	SAFETY VALVE COUPLING	1	
21-1	BG10489054100	O形環	O-RING	6	*31	B070001005	進口安全弁	SAFETY VALVE (ITALY)	1	
22-1	B020619310	迫緊固定片	SET PLATE	6						
22-2	B020319310	高壓迫緊	PACKING	6						
23	B021219310	迫緊軸套	PACKING COLLAR	3						
24	BJ61901310	U迫緊彈簧	SPRING	3						
25A	B040019311	活門組	VALVE ASSY	3						
25	B040219310	進出水活門座	VALVE SEAT	3						
25-1	B040319310	進水活門帽	VALVE CAGE	3						
25-2	BJ21902310	進水活門彈簧	SPRING	3						
25-3	B040119310	進水活門塞	VALVE PLUG	3						
25-4	BG10282033440	O形環	O-RING	3	*31 零件表及展開圖請參閱第4頁。			*31 parts list & diagram please refer to page 4.		
25-5	BG30284033	背托環	BACKUP RING	3						

2024.06V.

零件表PARTS LIST 進口安全弁 B070001005 / 60.1470.00 VB53 UNLOAD. 1/2F BSP 50MPa-AI303 (MADE IN ITALY)

圖號 NO.	P/N No.	WULI Code	名 稱	DESCRIPTION	Q'TY/ UNIT	最低訂量 MOQ
1	60.1404.51R		出水接頭	SHUTTER COUPL., 1/2F BSP Sst.	1	3
2	10.3068.01R	D011102001	O形環	O-RING, 1,78x17,17 mm Ni 85	2	10
3	60.1403.60R		止水彈簧	SPRING, 0,8x10,7x23 mm aisi316 Sst.	3	10
4	60.1402.51R	D011102010	出水閥座套	SHUTTER PIN, Sst.	1	3
5	10.3230.01R	D011102011	O形環	O-RING, 3,53x7,52 mm Ni85	1	10
6	60.1401.55R		安全弁本體	Sst VB23/43 BODY	1	1
7	10.3066.01R	D011102002	O形環	O-RING, 1,78x15,6 mm Ni 85	1	10
8	60.1809.51R	D011102003	壓力閥座	SEAT, 11,6x19x6 mm Sst.	1	5
9	60.1808.51R	D011102004	壓力閥	SHUTTER PIN, M8 Sst.	1	3
10	60.1410.51R		間隔環	SPACER RING, 10x23,4x10,5 mm Sst.	1	3
11	10.4022.00R	D011102005	背托環	BACK-UP RING, 10x12x2 mm	1	10
12	10.3059.10R	D011102006	O形環	O-RING, 1,78x11,11 mm Vi 70	1	10
13	10.3072.01R	D011102007	O形環	O-RING, 1,78x20,35 mm Ni 85	1	10
14	60.1409.51R		間隔環	SPACER RING, 10,3x23,5x17,5 mm Sst.	1	3
15	10.2029.00R	D011102008	背托環+O形環	STEM SEAL, 14x19x2.2 mm+O-RING	1	4
16	60.1411.51R	D011102009	壓力閥桿	PISTON, M8 Sst.	1	5
17	60.1406.51R		安全弁接頭	PISTON HOLDER, Sst.	1	5
18	14.7443.10R		鋼珠	BALL, 11/32" Sst.	1	10
19	60.1405.31R		彈簧下座	SPRING REST PIN, BRASS	1	10
20	60.5402.61R		調壓彈簧	Spring, 5,4x22x64,5 mm z.pl.	1	3
21	16.2100.00R		固定環	SET SCREW, DIN914 M4x4 mm	1	10
22	60.1728.31R		環形螺母	RING NUT, M27x1 BRASS	1	10
23	60.1408.31R		調壓螺帽	VALVE REGULATING RING NUT, M27x1 BRASS	1	5



B070001005
適用機型FOR:
WH-70018
WH-70021
WH-70024
WH-70026