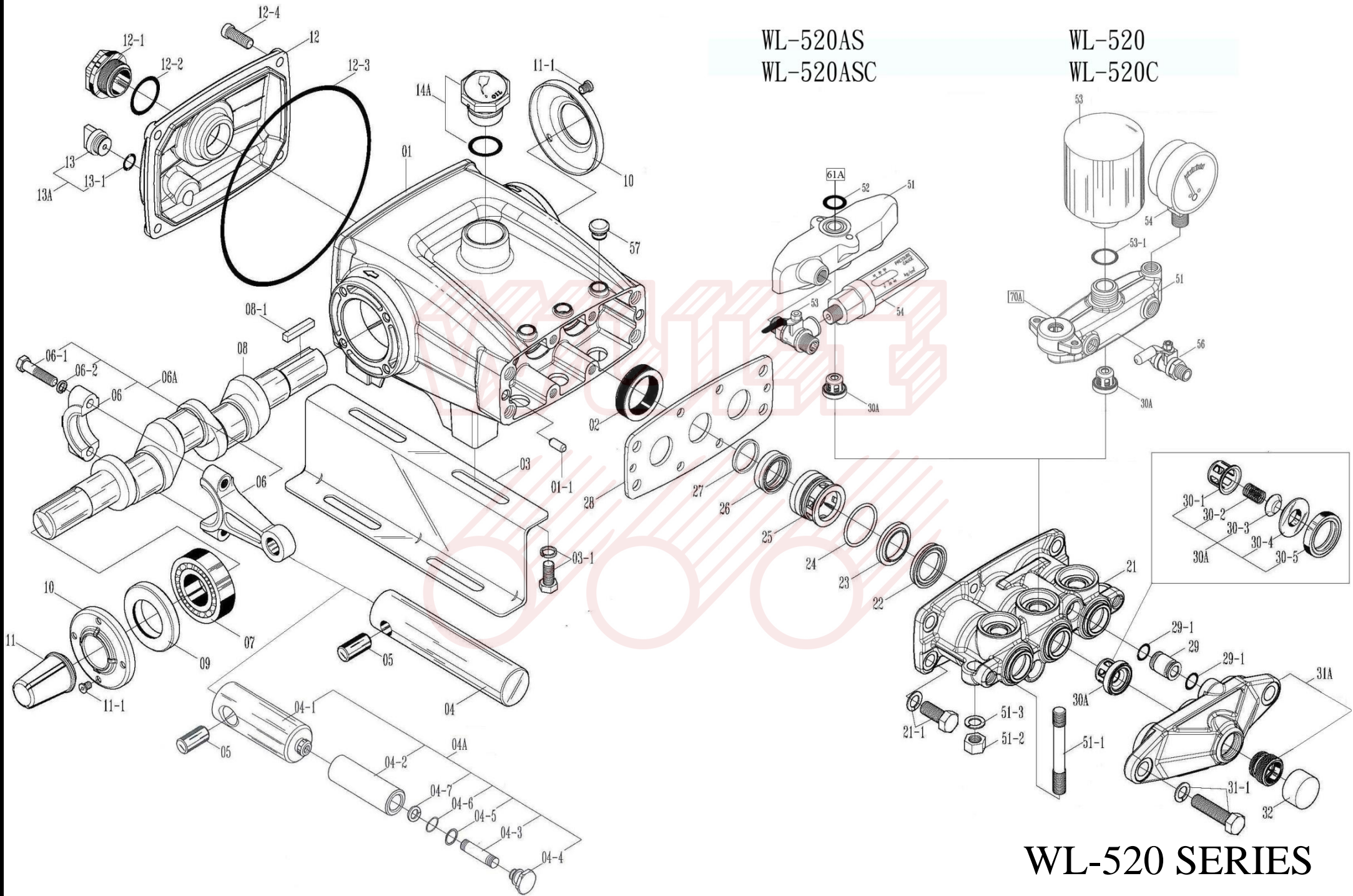


WL-520AS
WL-520ASC

WL-520
WL-520C



WL-520 SERIES

零件表PARTS LIST WL-520 / WL-520C / WL-520AS / WL-520ASC

圖號 NO.	編號 CODE	名稱	DESCRIPTION	Q'TY	圖號 NO.	編號 CODE	名稱	DESCRIPTION	Q'TY
01	B010101020	曲軸箱(紅)	CRANKCASE (RED)	1	11-1	BS12108010100	大扁頭螺絲	SCREW	8
	B010101030	曲軸箱(藍)	CRANKCASE (BLUE)	1	12	B011601021	曲軸箱後蓋(紅)	REAR COVER (RED)	1
01-1	B012901110	汽缸銷	SET PIN	2		B011601022	曲軸箱後蓋(藍)	REAR COVER (BLUE)	1
02	B010201000	柱塞油封	PISTON OIL SEAL	3	12-1	B012201020	油鏡	OIL WINDOW	1
03	B010301000	腳座	CRANKCASE STAND	2	12-2	BG10234028700	O形環	O-RING	1
03-1	BS11112016122	六角螺絲附華司	SET BOLT W/ WASHER	4	12-3	B011701000	後蓋迫緊	REAR COVER PACKING	1
04	B010401010	不鏽鋼柱塞	SST PISTON	3	12-4	BS12108016100	大扁頭螺絲	SCREW	4
04A	B013007001	陶瓷柱塞組	CERAMIC PISTON ASSY		13A	B011801001	排油螺絲組	DRAINAGE SCREW ASSY	1
04-1	B013107000	柱塞桿	PISTON ROD	3	13	B011801000	排油螺絲	DRAINAGE SCREW	1
04-2	B013207001	陶瓷柱塞套	CERAMIC PISTON SLEEVE	3	13-1	BG10110015	O形環	O-RING	1
04-3	B013307000	柱塞套固定螺絲	PISTON SCREW	3	14A	B011901014	加油蓋組	OIL INLET COVER ASSY	1
04-4	B013407000	柱塞套固定螺帽	SET NUT	3	21	B020101021	汽缸	CYLINDER	1
04-5	B013507000	柱塞套平墊圈	GASKET	3	21-1	BS11110025122	六角螺絲附華司	SET BOLT W/ WASHER	6
04-6	BG10095014520	O形環	O-RING	3	22	B020301160	U迫緊	U-PACKING	3
04-7	BG30101014010	背托環	BACK-UP RING	3	23	B020301141	U迫緊墊片	SPACER	3
05	B010501110	柱塞銷	PISTON PIN	3	24	BG10290033	O形環	O-RING	3
06A	B010601001	連桿組	CONNECTING ROD ASSY	3	25	B020501010	U迫緊固定環	SET RING	3
06	N/A	連桿	CONNECTING ROD	3	26	B020301170	防水迫緊	WATERPROOF PACKING	3
06-1	BS11206025500	六角螺絲	SET BOLT	6	27	B020301151	防水迫緊墊片	SPACER	3
06-2	BS32206501	彈簧華司	SPRING WASHER	6	28	B020601000	迫緊防脫片	SET PLATE	1
07	B010701050	軸承	BEARING	2	29	B024102000	連接管	CONNECTING PIPE	2
08	B010801110	曲軸	CRANKSHAFT	1	29-1	BG10100014010	O形環	O-RING	4
08-1	B012101110	曲軸鍵	CRANKSHAFT KEY	1	30A	B040001001	活門組	VALVE ASSY	6
09	B010901000	曲軸油封	CRANKSHAFT OIL SEAL	2	30-1	B040301000	活門帽	VALVE CAGE	6
10	B011002112	曲軸油封蓋	CRANKSHAFT OIL SEAL COVER	2	30-2	BJ20101000	活門彈簧	VALVE SPRING	6
11	B011102111	曲軸油封蓋(套筒)	CRANKSHAFT OIL SEAL COVER (CONE)	1	30-3	B040101000	活門塞	VALVE PLUG	6

零件表PARTS LIST WL-520 / WL-520C / WL-520AS / WL-520ASC

圖號 NO.	編號 CODE	名稱	DESCRIPTION	Q'TY	圖號 NO.	編號 CODE	名稱	DESCRIPTION	Q'TY
30-4	B040201000	活門座	VALVE SEAT	6	ACC.	B150601110	過濾網申目	FILTER SOCKET	1
30-5	B040401000	活門皮	VALVE PACKING	6	ACC.	B150901110	過濾網	FILTER	1
31A	B031401032	進水室含銅接頭	SUCTION CHAMBER W/CONNECTOR	1	ACC.	BP11212190300	皮帶輪 7A2*19*5	PULLEY 7A2*19*5	1
N/A	B031401021	進水室	SUCTION CHAMBER	1	ACC.	BS11110019121	皮帶輪螺絲	PULLEY SET BOLT	1
N/A	B032301110	進水室接頭	CONNECTOR	1					
31-1	BS11112035122	六角螺絲附華司	SET BOLT W/ WASHER	2					
32	B031501110	*進水口蓋(選配)	*SUCTION CHAMBER CAP (OPTIONAL)	1					
51	B030201021	出水室 (520/520C)	OUTLET CHAMBER (520/520C)	1					
	B030301021	出水室 (520AS/ASC)	OUTLET CHAMBER (520AS/ASC)	1					
51-1	BS15112060100	雙頭牙螺絲	DOUBLE-END SCREW	2					
51-2	BS21112100	六角螺帽	NUT	2					
51-3	BS32112200	彈簧華司	SPRING WASHER	2					
52	BG10140018500	O形環	O-RING	1					
53	B030401110	空氣室 (520/520C)	AIR CHAMBER (520/520C)	1					
	B030901110	三通球形閥 (520AS/ASC)	T-BALL VALVE (520AS/ASC)	1					
53-1	BG10219027100	O形環	O-RING	1					
54	B031101000	壓力錶 (圓)	PRESSURE GAUGE (ROUND)	1					
	B250001021	壓力錶 (橫)	PRESSURE GAUGE (HORIZONTAL)						
56	B031601110	球形閥 8.5mm	BALL COCK 8.5mm	2					
57	B012405000	滴油孔蓋	DRIP CAP	3					
*61A	B050001311	自動洩壓總成(G2)	UNLOADING VALVE ASSY (G2)	1					
	B050001331	自動洩壓總成(G3)	UNLOADING VALVE ASSY (G3)			*61A(G2)零件表及展開圖請參閱第4頁。	*61A(G2) parts list & diagram please refer to page 4.		
*70A	B050001004	安全弁(不含調壓螺絲組)(G2)	SAFETY VALVE ASSY(W/O KNOB) (G2)	1					
	B050001006	安全弁(G3)	SAFETY VALVE ASSY(G3)			*61A(G3)零件表及展開圖請參閱第5頁。	*61A(G3) parts list & diagram please refer to page 5.		
ACC.	B150101001	吸水管組 3/4"*9尺	SUCTION HOSE ASSY	1					
ACC.	B150201001	迴水管組 1/2"*9尺	OVERFLOW HOSE ASSY	1					

2020.02V

圖號 NO.	編號 CODE	名稱	DESCRIPTION	Q'TY	圖號 NO.	編號 CODE	名稱	DESCRIPTION	Q'TY
61	B050201000	洩壓汽缸套	UNLOADING VALVE CYLINDER	1	74	BJ40101000	調壓彈簧	PRESSURE REGULATING SPRING	1
*61-1	BS13110047122	六角十字螺絲附華司	SET BOLT W/ WASHER	2	75	B051301000	彈簧上座	SPRING SEAT (UPPER)	1
61-2	BG10220027010	O形環	O-RING	2	76	B050401000	調壓彈簧套	PRESSURE REGULATING PIPE	1
62	BJ50101000	洩壓輔助彈簧	AUXILIARY SPRING	1	*79A	B053001001	調壓螺絲組	PRESSURE REGULATING KNOB ASSY	1
63A	B052201001	柱塞活門組	PISTON VALVE ASSY	1	84	B031601110	球形閥 8.5mm	BALL COCK 8.5mm	2
63-1	B052201000	柱塞活門體	PISTON VALVE BODY	1	*61-1 不屬於自動洩壓總成標準零件，須另外訂購。 * 61-1 is not a standard part, please order it as needed.				
63-2	BS18105016300	圓頭自攻螺絲	SCREW	1	*79A 不屬於自動洩壓總成標準零件，須另外訂購。 * 79A is not a standard part, please order it as needed.				
63-3	B052401000	閥塞頭	VALVE PLUG	1	2020.02V				
63-4	BG10080012010	O形環	O-RING	1					
63-5	B052501000	閥塞座	VALVE PLUG SEAT	1					
63-6	BJ30101000	球閥固定彈簧	SPRING	1					
63-7	B052301000	彈簧底座	SPRING SEAT	1					
63-8	B052601000	C扣環	C-CLIP	1					
64	BG20250030	方形環	SQUARE RING	1					
65	B052101110	壓力閥輔助片	AUXILIARY PLATE	1					
66	B051001000	壓力閥座	VALVE SEAT	1					
67	B050901000	壓力閥	PRESSURE VALVE	1					
68	B050801120	壓力閥桿	VALVE ROD	1					
69	B051901000	消音片	DAMPER PLATE	1					
70	B050501000	迴水座	OVERFLOW CHAMBER	1					
70-1	B051801110	迴水接頭	OVERFLOW COUPLING	1					
70-2	BS14108025122	圓頭螺絲附華司	SCREW W/ WASHER	4					
71	B050701020	伸縮套皮	COMPRESSION PACKING	1					
71-1	B051101010	平墊圈	WASHER	1					
72	B052001110	固定環	SET RING	1					
73	B051401110	彈簧下座(有牙)	SPRING SEAT	1					

B050001311 (G2)
適用機型 FOR:
WL-25ASB SERIES
WL-520AS SERIES

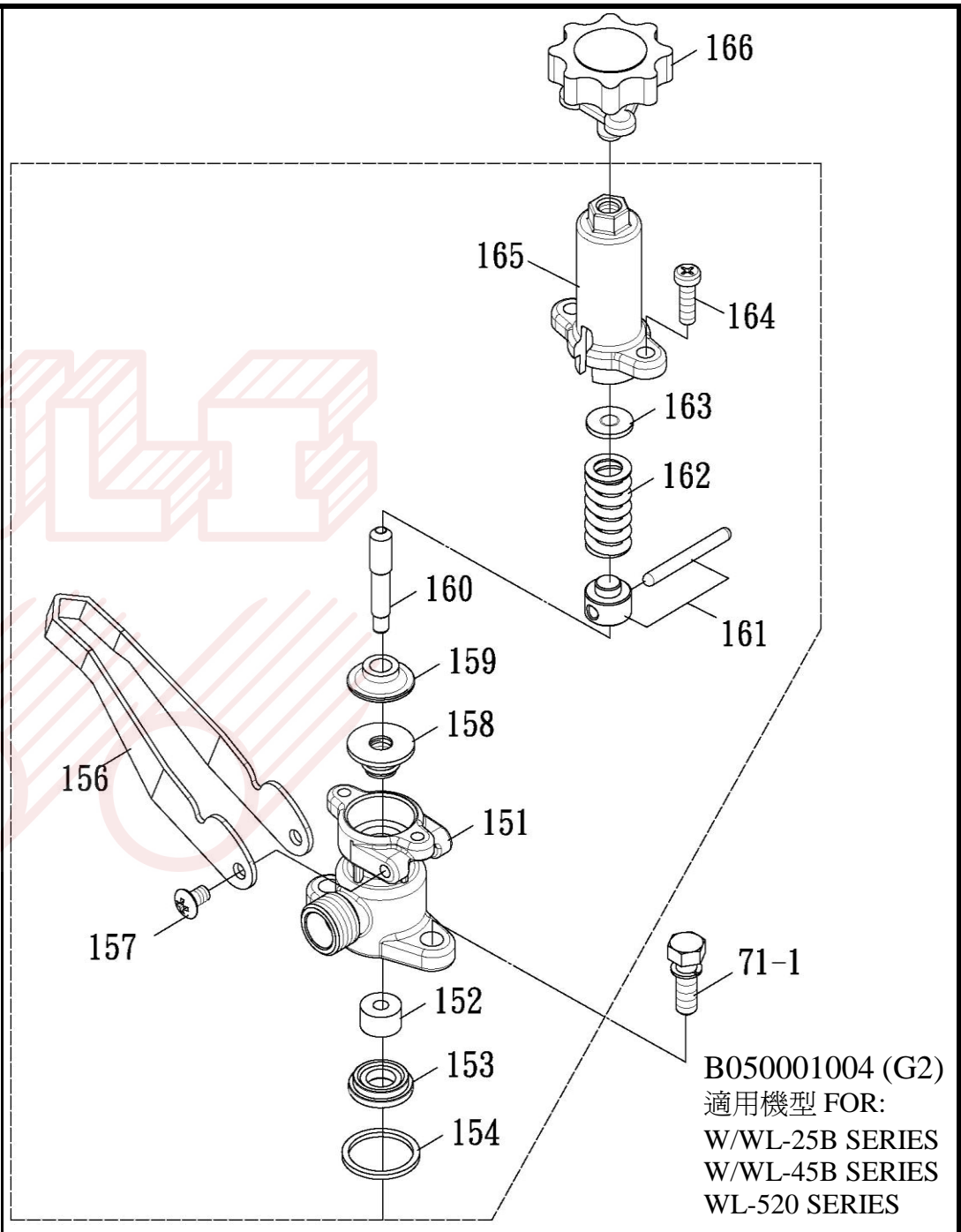
圖號 NO.	編號 CODE	名稱	DESCRIPTION	Q'TY	圖號 NO.	編號 CODE	名稱	DESCRIPTION	Q'TY
61	B050201000	洩壓汽缸套	UNLOADING VALVE CYLINDER	1	74	BJ40101002	調壓彈簧	PRESSURE REGULATING SPRING	1
*61-1	BS13110047122	六角十字螺絲附華司	SET BOLT W/ WASHER	2	75	B051301250	彈簧上座	SPRING SEAT (UPPER)	1
61-2	BG10220027010	O形環	O-RING	2	76	B050301002	調壓彈簧套	PRESSURE REGULATING PIPE	1
62	BJ50101000	洩壓輔助彈簧	AUXILIARY SPRING	1	77	B052001010	安全弁固定環	SET RING	1
63A	B052201001	柱塞活門組	PISTON VALVE ASSY	1	78	B053601000	調壓把手墊片	GASKET	1
63-1	B052201000	柱塞活門體	PISTON VALVE BODY	1	79	B053001011	調壓把手	PRESSURE REGULATING KNOB	1
63-2	BS18105016300	圓頭自攻螺絲	SCREW	1	84	B031601110	球形閥 8.5mm	BALL COCK 8.5mm	2
63-3	B052401000	閥塞頭	VALVE PLUG	1	*61-1 不屬於自動洩壓總成標準零件，須另外訂購。 * 61-1 is not a standard part, please order it as needed.				
63-4	BG10080012010	O形環	O-RING	1	2020.02V				
63-5	B052501000	閥塞座	VALVE PLUG SEAT	1					
63-6	BJ30101000	球閥固定彈簧	SPRING	1					
63-7	B052301000	彈簧底座	SPRING SEAT	1					
63-8	B052601000	C扣環	C-CLIP	1					
64	BG20250030	方形環	SQUARE RING	1					
65	B052101110	壓力閥輔助片	AUXILIARY PLATE	1					
66	B051001000	壓力閥座	VALVE SEAT	1					
67	B050901000	壓力閥	PRESSURE VALVE	1					
68	B050801120	壓力閥桿	VALVE ROD	1					
69	B051901000	消音片	DAMPER PLATE	1					
70	B050501000	迴水座	OVERFLOW CHAMBER	1					
70-1	B051801110	迴水接頭	OVERFLOW COUPLING	1					
70-2	BS14108025122	圓頭螺絲附華司	SCREW & WASHER	4					
71	B050701020	伸縮套皮	COMPRESSION PACKING	1					
71-1	B051101010	平墊圈	WASHER	1					
72	B052001110	固定環	SET RING	1					
73	B051401110	彈簧下座(有牙)	SPRING SEAT	1					

B050001331 (G3)
適用機型 FOR:
WL-25ASB SERIES
WL-520AS SERIES

零件表PARTS LIST 安全弁 B050001004 (G2) / SAFETY VALVE ASSEMBLY (G2)

W/WL-25B/45B/520系列用

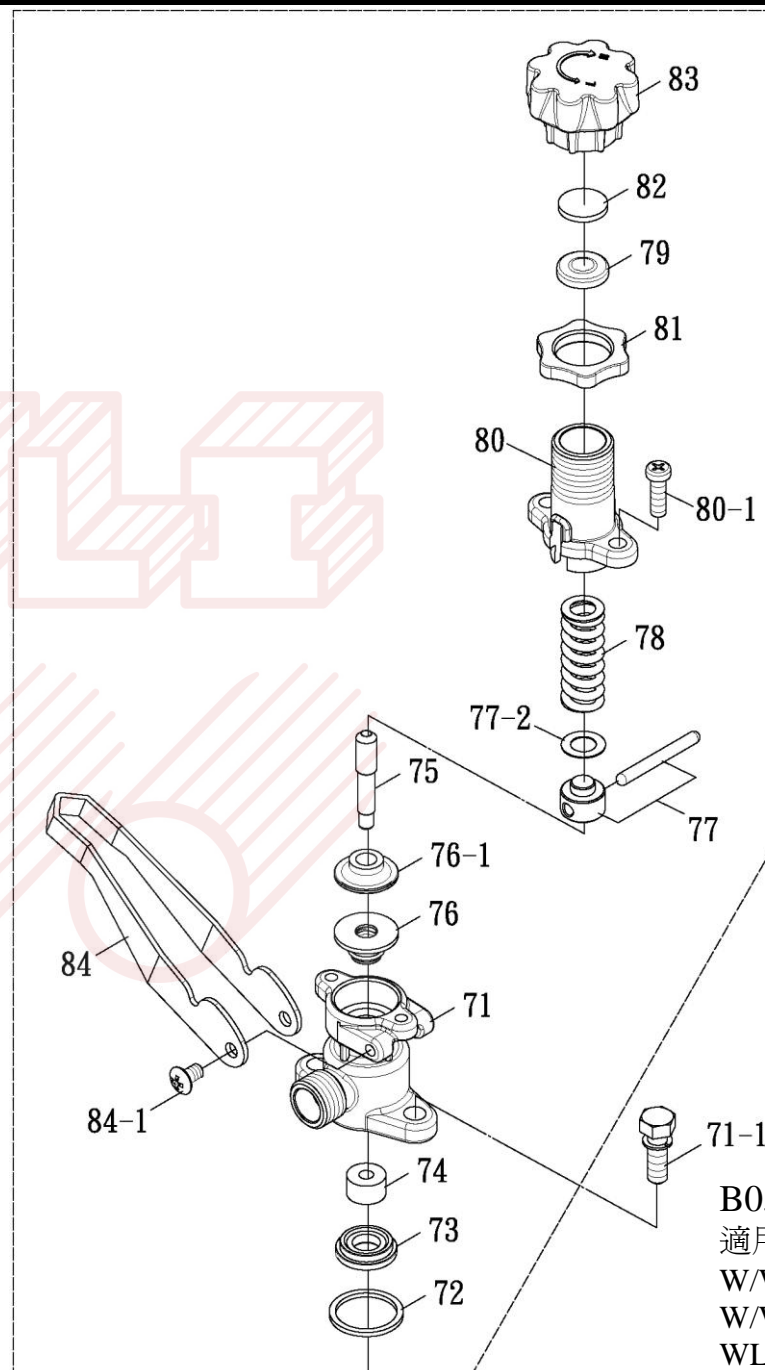
圖號 NO.	編號 CODE	名稱	DESCRIPTION	Q'TY
*71-1	BS11110025122	六角螺絲附華司	SET BOLT W/ WASHER	2
151	B050101031	迴水座	OVERFLOW CHAMBER	1
152	B050901000	壓力閥	PRESSURE VALVE	1
153	B051001000	壓力閥座	VALVE SEAT	1
154	BG20250030	方形環	SQUARE RING	1
156	B050601110	調壓把手	PRESSURE REGULATING HANDLE	1
157	BS12108013100	大扁頭螺絲	SCREW	2
158	B050701000	伸縮套皮	COMPRESSION PACKING	1
159	B051201000	閥桿保持環	MAINTAINING RING	1
160	B050801110	壓力閥桿	VALVE ROD	1
161	B051401001	彈簧下座組	SPRING SEAT ASSY	1
162	BJ40101000	調壓彈簧	PRESSURE REGULATING SPRING	1
163	B051301000	彈簧上座	SPRING SEAT (UPPER)	1
164	BS12108016100	大扁頭螺絲	SCREW	2
165	B050301000	調壓彈簧套	PRESSURE REGULATING PIPE	1
*166	B053001001	調壓螺絲組	PRESSURE REGULATING KNOB ASSY	1
*71-1 不屬於安全弁標準零件，須另外訂購。		* 71-1 is not a standard part, please order it as needed.		
*166 不屬於安全弁標準零件，須另外訂購。		* 166 is not a standard part, please order it as needed.		
			2020.02V	



零件表PARTS LIST 安全弁 B050001006 (G3) / SAFETY VALVE ASSEMBLY (G3)

W/WL-25B/45B/520系列用

圖號 NO.	編號 CODE	名稱	DESCRIPTION	Q'TY
71	B050101031	迴水座	OVERFLOW CHAMBER	1
*71-1	BS11110025122	六角螺絲附華司	SET BOLT W/ WASHER	2
72	BG20250030	方形環	SQUARE RING	1
73	B051001000	壓力閥座	VALVE SEAT	1
74	B050901000	壓力閥	PRESSURE VALVE	1
75	B050801110	壓力閥桿	VALVE ROD	1
76	B050701000	伸縮套皮	COMPRESSION PACKING	1
76-1	B051201000	閥桿保持環	MAINTAINING RING	1
77	B051401001	彈簧下座組	SPRING SEAT ASSY	1
N/A	B051401000	彈簧下座(無牙)	SPRING SEAT	1
N/A	B051501000	調壓橫棒	PRESSURE ADJUSTING PIN	1
77-2	B053601001	調壓墊片	SPACER	1
78	BJ40101002	調壓彈簧	PRESSURE REGULATING SPRING	1
79	B051301250	彈簧上座	SPRING SEAT (UPPER)	1
80	B050301001	調壓彈簧套	PRESSURE REGULATING SPRING SLEEVE	1
80-1	BS12108016100	大扁頭螺絲	SCREW	2
81	B052001010	安全弁固定環	SET RING	1
82	B053601000	調壓把手墊片	GASKET	1
83	B053001011	調壓把手	PRESSURE REGULATING KNOB	1
84	B050601110	調壓把手	PRESSURE REGULATING HANDLE	1
84-1	BS12108013100	大扁頭螺絲	SCREW	2
*71-1 不屬於安全弁標準零件，須另外訂購。 * 71-1 is not a standard part, please order it as needed.				
2020.02V				



B050001006 (G3)
適用機型 FOR:
W/WL-25B SERIES
W/WL-45B SERIES
WL-520 SERIES