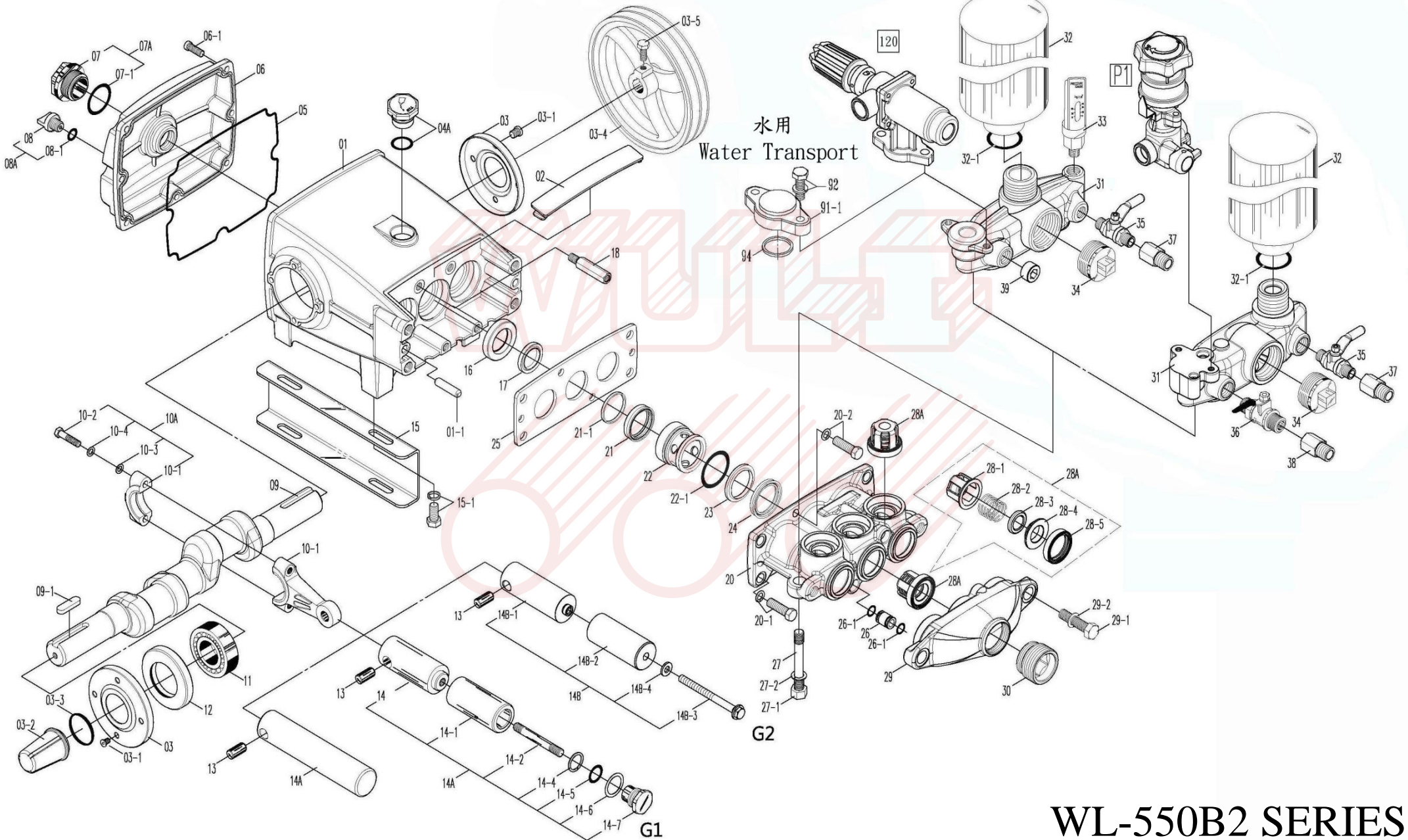


WL-550ASB2
WL-550ASBC2

WL-550B2
WL-550BC2



WL-550B2 SERIES

零件表PARTS LIST WL-550B2 / WL-550BC2 / WL-550ASB2 / WL-550ASBC2 (兩用General / 水用Water Transport)

圖號 NO.	編號 CODE	名稱	DESCRIPTION	Q'TY	圖號 NO.	編號 CODE	名稱	DESCRIPTION	Q'TY
01	B010103050	曲軸箱(紅)	CRANKCASE (RED)	1	10-4	BS32110500	彈簧華司	SPRING WASHER	6
	B010103051	曲軸箱(藍)	CRANKCASE (BLUE)		11	B010703010	軸承	BEARING	2
01-1	B012904000	汽缸銷	SET PIN	2	12	B010918010	曲軸油封	CRANKSHAFT OIL SEAL	2
02	B011403000	防塵蓋	DUSTPROOF CAP	1	13	B010503110	柱塞銷	PISTON PIN	3
03	B011003110	曲軸油封蓋	CRANKSHAFT OIL SEAL COVER	2	14A	B010403050	不鏽鋼柱塞	SST PISTON	3
03-1	BS12108010100	大扁頭螺絲	SCREW	8		B013003002	陶瓷柱塞組(G1)	CERAMIC PISTON ASSY (G1)	
03-2	B011102111	曲軸油封蓋(套筒)	CRANKSHAFT OIL SEAL COVER (CONE)	1	14	B013103050	柱塞桿	PISTON	3
03-3	BG10280030	O形環	O-RING	1	14-1	B013203000	柱塞套	CERAMIC PISTON SLEEVE	3
03-4	BP11822243	皮帶輪 10B2*24*5	PULLEY 10B2*24*5	1	14-2	B013303000	柱塞套固定螺絲	PISTON SCREW	3
03-5	BS11112032121	六角螺絲	SCREW	1	14-4	BG30190024	背托環	BACK-UP RING	3
04A	B011901014	加油蓋組	OIL INLET COVER ASSY	1	14-5	BG10180024	O形環	O-RING	3
05	B011703000	後蓋迫緊	REAR COVER PACKING	1	14-6	B013503000	柱塞套平墊圈	GASKET	3
06	B011603000	曲軸箱後蓋(紅)	REAR COVER (RED)	1	14-7	B013403000	柱塞套固定螺帽	SET NUT	3
	B011603310	曲軸箱後蓋(藍)	REAR COVER (BLUE)		14B	B013003004	陶瓷柱塞組(G2)	CERAMIC PISTON ASSY (G2)	3
06-1	BS12108016100	大扁頭螺絲	SCREW	7	14B-1	B013103150	柱塞桿	PISTON ROD	3
07A	B012201003	油鏡組	OIL WINDOW ASSY	1	14B-2	B013203100	柱塞套	CERAMIC PISTON SLEEVE	3
07	B012201020	油鏡	OIL WINDOW	1	14B-3	B013303100	柱塞套固定螺絲	PISTON SCREW	3
07-1	BG10234028700	O形環	O-RING	1	14B-4	B015122153	止水墊片	GASKET	3
08A	B011801001	排油螺絲組	DRAINAGE SCREW ASSY	1	15	B010303000	腳座	CRANKCASE STAND	2
08	B011801000	排油螺絲	DRAINAGE SCREW	1	15-1	BS11112016122	六角螺絲附華司	SET BOLT W/ WASHER	4
08-1	BG10110015	O形環	O-RING	1	16	B010203000	柱塞油封	PISTON OIL SEAL	3
09	B010803050	曲軸	CRANKSHAFT	1	17	B011203010	柱塞中間皮	WATERPROOF RING	3
09-1	B012101110	曲軸鍵	CRANKSHAFT KEY	1	18	B012303050	軸箱螺絲	SCREW	1
10A	B010603001	連桿組	CONNECTING ROD ASSY	3	20	B020103050	汽缸	CYLINDER	1
10-1	N/A	連桿	CONNECTING ROD	3	20-1	BS11112032122	六角螺絲附華司	SET BOLT W/ WASHER	4
10-2	BS11208035500	六角螺絲	SET BOLT	6	20-2	BS11110032222	六角螺絲附華司	SET BOLT W/ WASHER	2
10-3	BS31208500	平面華司	WASHER	6	21	B020303111	防水迫緊(兩用)	PACKING (GENERAL)	3

零件表PARTS LIST WL-550B2 / WL-550BC2 / WL-550ASB2 / WL-550ASBC2 (兩用General / 水用Water Transport)

圖號 NO.	編號 CODE	名稱	DESCRIPTION	Q'TY	圖號 NO.	編號 CODE	名稱	DESCRIPTION	Q'TY
21	B020303113	防水迫緊(NKA11/水用)	PACKING (WATER TRANSPORT)	3	32-1	BG10330039	O形環	O-RING	1
21-1	B020303091	防水迫緊墊片	SPACER	3	33	B250001031	壓力錶	PRESSURE GAUGE	1
22	B020503050	U迫緊固定環	SET RING	3	34	B030703020	出水塞頭 PT1-1/4	PLUG PT1-1/4	1
22-1	BG10410046	O形環	O-RING	3	35	B031603110	球形閥 10mm	BALL COCK 10mm	1
23	B020303081	U迫緊墊片	SPACER	3	36	B031604110	球形閥 13mm	BALL COCK 13mm	1
24	B020303101	U迫緊 (VN905/兩用)	U-PACKING (General)	3	37	B032003000	接頭由令 10mm	CONNECTOR 10mm	1
	B020303103	U迫緊(NKA11/水用)	U-PACKING (WATER TRANSPORT)		38	B032004000	接頭由令 13mm	CONNECTOR 13mm	1
25	B020603050	迫緊防脫套	SET SOCKET	1	39	BS50016000	內六角塞頭 PT1/2	PLUG PT1/2	1
26	B024102000	連接管	CONNECTING PIPE	2	【兩用】 【GENERAL】				
26-1	BG10100014010	O形環	O-RING	4	*120	B050003311	自動洩壓總成	UNLOADING VALVE ASSY	1
27	BS15116078300	雙頭牙螺絲	DOUBLE-END SCREW	2	*P1	B050002024	安全弁 (中文)	SAFETY VALVE ASSY (zh)	1
27-1	BS21116200	六角螺帽	NUT	2		B050002025	安全弁 (英文)	SAFETY VALVE ASSY (en)	
27-2	BS32116200	彈簧華司	SPRING WASHER	2	ACC.	B150103001	吸水管組 1-1/4"*10尺	SUCTION HOSE ASSY	1
28A	B040003031	活門組	VALVE ASSY	6	ACC.	B150101001	吸水管組 3/4"*9尺	SUCTION HOSE ASSY	1
28-1	B040303020	活門帽	VALVE CAGE	6	ACC.	B150603110	過濾網申目	FILTER SOCKET	1
28-2	BJ20305000	活門彈簧	VALVE SPRING	6	ACC.	B150903110	過濾網	FILTER	1
28-3	B040103020	活門塞	VALVE PLUG	6	【水用】 【FOR WATER TRANSPORT ONLY】				
28-4	B040236090	活門座	VALVE SEAT	6	91-1	B031703000	迴水桿底座	OVERFLOW ROD SEAT	1
28-5	B040436090	活門皮	VALVE PACKING	6	92	BS11110025122	六角螺絲附華司	SET BOLT W/ WASHER	2
29/30	B031403052	進水室含銅接頭	SUCTION CHAMBER W/ CONNECTOR	1	94	BG20250030	方形環	SQUARE RING	1
29	B031403050	進水室	SUCTION CHAMBER	1	ACC.	B150403110	吸水管蝶頭	SUCTION HOSE WING NUT	1
30	B032303050	進水接頭	CONNECTOR	1	ACC.	B150503120	吸水管申目	SUCTION HOSE SOCKET	1
29-1	BS11116050100	六角螺絲	SET BOLT	2	ACC.	BG20280037030	方形環	SQUARE RING	1
29-2	BS32116200	彈簧華司	SPRING WASHER	2					
31	B030203051	出水室	OUTLET CHAMBER	1	*120零件表及展開圖請參閱第4頁。				*120 parts list & diagram please refer to page 4.
	B030203050	出水室(水用/AS系列)	OUTLET CHAMBER(WATER TRANSPORT/AS SERIES)		*P1零件表及展開圖請參閱第5頁。				*P1 parts list & diagram please refer to page 5.
32	B030403000	空氣室	AIR CHAMBER	1					

2020.02V

圖號 NO.	編號 CODE	名稱	DESCRIPTION	Q'TY	圖號 NO.	編號 CODE	名稱	DESCRIPTION	Q'TY
*92	BS11110025122	六角螺絲附華司	SET BOLT W/ WASHER	2	143-2	BS32108300	彈簧華司	SPRING WASHER	4
121	B050203001	洩壓汽缸套	UNLOADING VALVE CYLINDER	1	144	B071409000	彈簧下座	SPRING SEAT	1
123	BG20250030	方形環	SQUARE RING	1	145	BJ41101000	調壓彈簧	PRESSURE REGULATING SPRING	1
124	BG10300035010	O形環	O-RING	2	146	B071311000	彈簧上座	SPRING SEAT (UPPER)	1
125	BJ50301010	洩壓輔助彈簧	AUXILIARY SPRING	1	147	B071709000	調壓螺帽	PRESSURE REGULATING KNOB	1
126	B052203001	柱塞活門組	PISTON VALVE ASSY	1					
127	B052203000	柱塞活門體	PISTON VALVE BODY	1	*92 不屬於自動洩壓總成標準零件，須另外訂購。				* 92 is not a standard part, please order it as needed.
128	BS14108010300	圓頭螺絲	SCREW	1				2020.04V	
129	B052403000	閥塞頭	VALVE PLUG	1					
129-1	BG10060008	O形環	O-RING	1					
130	BG10130018010	O形環	O-RING	1					
131	B052503000	閥塞座	VALVE PLUG SEAT	1					
132	BJ30301010	球閥固定彈簧	SPRING	1					
133	B052303110	彈簧底座	SPRING SEAT	1					
134	B052603000	C扣環	C-CLIP	1					
135	B051003010	壓力閥座	VALVE SEAT	1					
137	BG20320037	方形環	SQUARE RING	1					
138/139	B050803011	壓力閥桿組	VALVE ROD ASSY	1					
138	B050903000	壓力閥	PRESSURE VALVE	1					
139	B050803020	壓力閥桿	PRESSURE VALVE ROD	1					
140	B051903000	消音片	DAMPER PLATE	1					
141	BG10135018510	O形環	O-RING	2					
142	B050503011	迴水座	OVERFLOW CHAMBER	1					
142-1	B071109051	固定環	SET RING	1					
142-2	BS17106005300	無頭內六角螺絲	SCREW	2					
143-1	BS16108019300	內六角螺絲	HEX SCREW	4					

B050003311
 適用機型 FOR:
 WL-51ASB2 SERIES
 WL-550ASB2 SERIES

零件表PARTS LIST 安全弁 B050002024~5 / SAFETY VALVE ASSEMBLY

WL-530/550B2系列用

圖號 NO.	編號 CODE	名稱	DESCRIPTION	Q'TY	圖號 NO.	編號 CODE	名稱	DESCRIPTION	Q'TY
P1-1	B050602000	調壓把手 (中文)	PRESSURE REGULATING KNOB (zh)	1	P21-2	BS31105301	平面華司	WASHER	1
	B050602010	調壓把手 (英文)	PRESSURE REGULATING KNOB (en)		P21-3	BG10140017500	O形環	O-RING	1
P1-2	B054602000	安全弁上蓋	UPPER CAP	1	P21-4	BG10035007200	O形環	O-RING	1
P1-3	BS14204012300	圓頭螺絲	SCREW	1	P22	BS22204300	防鬆螺帽	NUT	1
P2	BS17208032500	調壓螺絲	PRESSURE REGULATING SCREW	1	P23	B054902002	把手開關鈕 (中文)	SWITCH (zh)	1
P2-1	BS21208201	六角螺帽	NUT	1		B054902003	把手開關鈕 (英文)	SWITCH (en)	
P3	B054402050	調壓把手螺帽	NUT	1	P23-1	B055002000	拉座用封口	SEAL	1
P4	B051301221	彈簧上座	SPRING SEAT (UPPER)	1	P24	B054302011	安全弁進水連接管	INLET CONNECTING PIPE	1
P5	BJ40101040	調壓彈簧	SPRING	1	P24-1	BG10105013500	O形環	O-RING	2
P6	B051402030	彈簧下座	SPRING SEAT	1	P25	B054302051	安全弁排氣連接管	AIR-RELEASE PIPE	1
P7	B050302001	調壓管	PRESSURE REGULATING PIPE	1	P25-1	BG10065009530	O形環	O-RING	2
P7-1	BS14206020300	圓頭螺絲	SCREW	2	*P11-1 不屬於安全弁標準零件，須另外訂購。 * P11-1 is not a standard part, please order it as needed.				
P7-2	BS32108300	彈簧華司	SPRING WASHER	2	2020.04V.				
P8	BJ70101010	壓力固定彈簧	SPRING	1	<p style="text-align: right;">B050002024/B050002025 適用機型 FOR: WL-530 SERIES WL-550B2 SERIES</p>				
P9	B310115080	鋼珠	SST BALL	1					
P10	B054702000	壓力指針	PRESSURE INDICATOR	1					
P10-1	BS14204006300	圓頭螺絲	SCREW	1					
P11	B050102070	安全弁本體	SAFETY VALVE BODY	1					
	B052902020	壓力閥桿滑套	VALVE ROD SLEEVE	1					
*P11-1	BS11110025122	六角螺絲附華司	SET BOLT W/ WASHER	2					
P11-3	BG10150020020	O形環	O-RING	1					
P12-1	BG10100015010	O形環	O-RING	2					
P12-2	B050802030	壓力閥桿	VALVE ROD	1					
P12-3	BG10080010	O形環	O-RING	1					
P12-4	B050902020	壓力閥	PRESSURE VALVE	1					
P12-5	BS14203012300	圓頭螺絲	SCREW	1					
P13	BG10190022010	O形環	O-RING	1					
P14	B051001000	壓力閥座	VALVE SEAT	1					
P15	BG10240029	O形環	O-RING	1					
P16	B054202000	閥座固定座	VALVE SEAT	1					
P17	B054502010	排氣止水墊片	SPACER	1					
P18	B050801221	安全弁止水桿	VALVE ROD	1					
P19	BJ00106370	M03增壓彈簧	SPRING	1					
P20	B054802010	O型環固定片	SET PLATE POM	1					
P21	B054402000	閥桿固定螺帽	NUT	1					
P21-1	BJ70101100	排氣把手固定彈簧	SPRING	1					